

BEFORE YOU BEGIN YOUR INSTALLATION



Shut off  
water supply



Flush hot and cold  
water supply lines



Required tools



Installation by License  
Professional Plumber



Flush the water pipe  
before installation

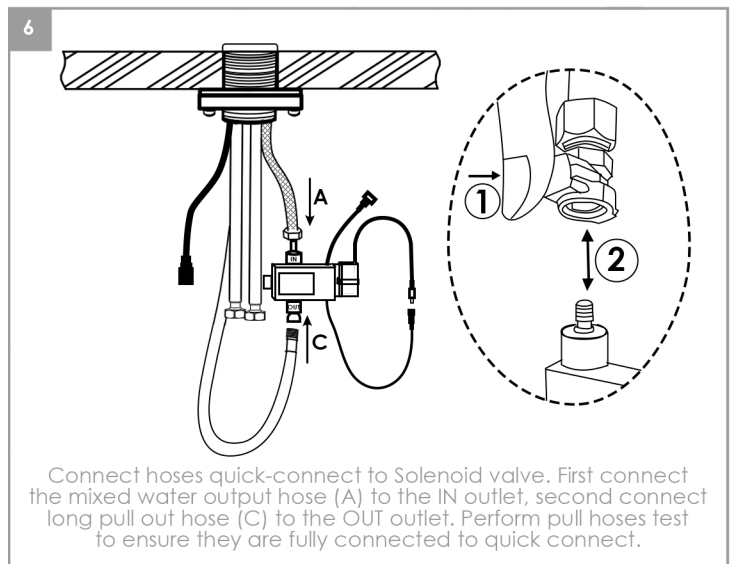
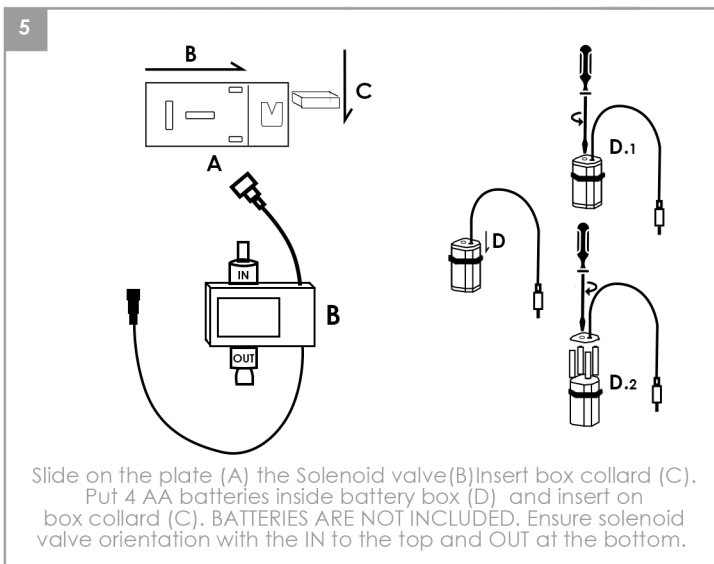
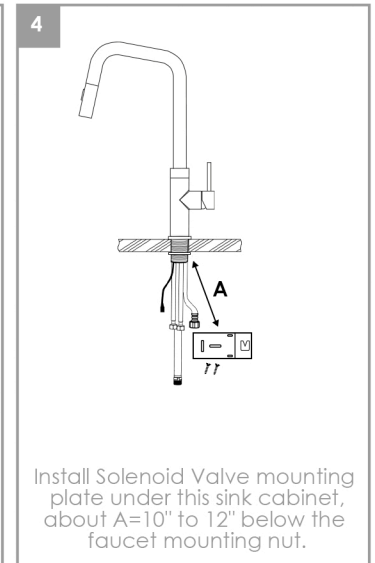
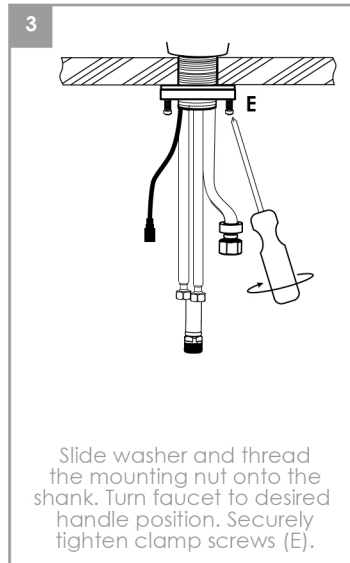
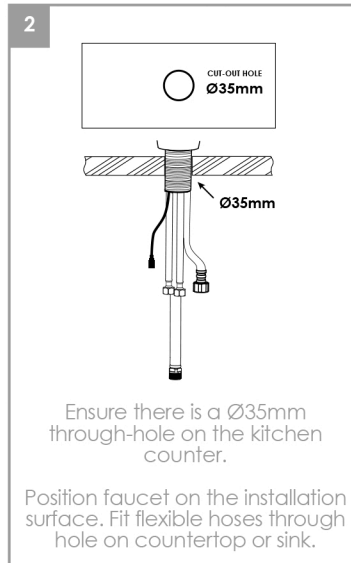
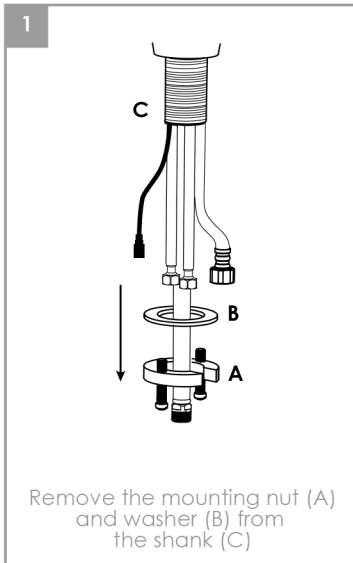


Drawings are for  
reference only



Do not disassemble  
the body

FAUCET INSTALLATION



CARE AND CLEANING

Clean the faucet frequently using mild soap or an on-abrasive cleaner and then quickly rinse with water and dry with soft cloth only.

Using abrasive cleaners, solvents, acid cleaners or any scrubbing detergent, polisher or scraper will damage the finish and void the warranty.

WARRANTY

For additional technical assistance or for any questions or concerns about your kitchen faucet's warranty, please contact us.

[www.stylishkb.com/warranty](http://www.stylishkb.com/warranty)

 [www.stylishkb.com](http://www.stylishkb.com)

 [care@stylishkb.com](mailto:care@stylishkb.com)

 +1-855-789-5352

### BEFORE YOU BEGIN YOUR INSTALLATION



Shut off  
water supply



Flush hot and cold  
water supply lines



Required tools



Installation by License  
Professional Plumber



Flush the water pipe  
before installation



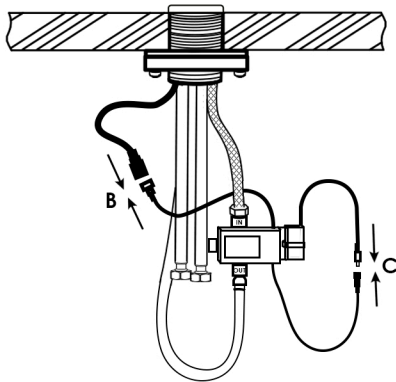
Drawings are for  
reference only



Do not disassemble  
the body

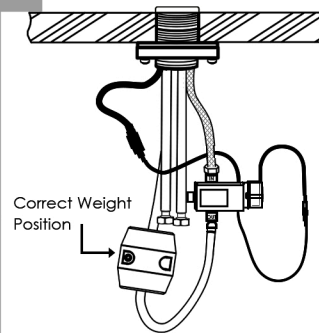
### FAUCET INSTALLATION

7



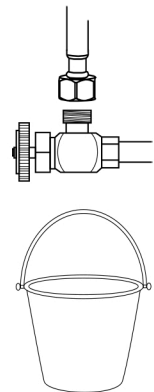
Connect faucet sensor to Solenoid valve (B)  
and connect the battery box to Solenoid valve (C)

8



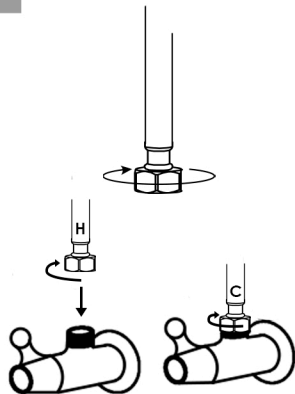
Position the weight near the  
"U" hose shape and on the  
opposite side of the  
quick-connect as per diagram

9



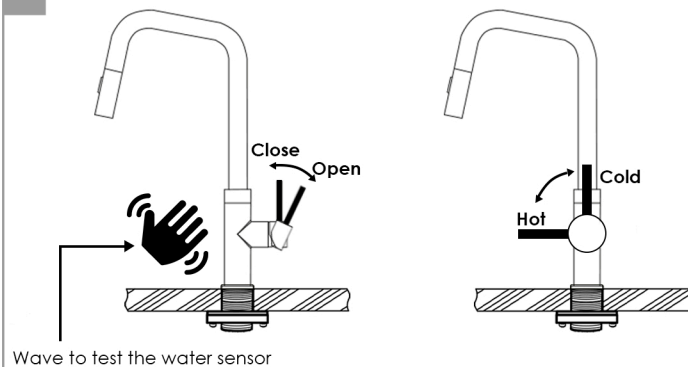
Before connecting supply hose,  
flush supply valves to clear any  
debris. Place a bucket under-  
neath valves and run water for 5  
to 10 seconds. Turn water off.

10



Connect Hot and Cold water  
lines to home water plumbing or  
shut-off valves. Do not overtighten.

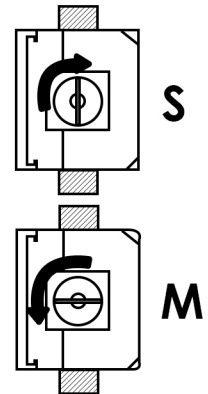
11



Wave to test the water sensor

Open shut-off valves and run water test,  
check for leaks and faucet operation

12



Operation mode: Faucet can  
be used in manual mode (M) and  
sensor mode (S) by adjusting  
Solenoid valve knob position

### IMPORTANT NOTES

- Batteries life last around 2 years but may need to be replaced sooner depends of heavy usage
- MANUAL OPERATION MODE: Faucet can operate like a standard faucet anytime by bypassing the solenoid valve, just need to turn knob to manual mode (See step 12 diagram for installation instructions)
- LOW BATTERY LEVEL: Sensor window light will blink intermittently as hand is wave on the sensor, batteries need replacement
- SAFETY PROTECTION: The faucet will turn off when reach 3 minutes of continuous time use.
- RESET: To reset your Stylish touchless faucet, turn off the water supply first, disconnect battery pack to the solenoid valve, Wait for around a minute before reconnecting it.
- NEED HELP?: If you need any technical or warranty support, email your order information to [care@stylishkb.com](mailto:care@stylishkb.com)



**GELA**  
**K-150**  
KITCHEN FAUCET TOUCHLESS SENSOR

#### BEFORE YOU BEGIN YOUR INSTALLATION



Shut off  
water supply



Flush hot and cold  
water supply lines



Required tools



Installation by License  
Professional Plumber



Flush the water pipe  
before installation



Drawings are for  
reference only



Do not disassemble  
the body

#### TROUBLESHOOTING FOR SENSOR FAUCET

- Thanks for your purchase, please read instructions and keep them for future reference
- We strongly recommend to have faucet installed by a professional trade
- Do not apply pressure or heavy scrubbing on sensor window as it can get damaged.

Problem	Possible cause	Solution(s)
Water is not coming out using touchless sensor mode	-Ensure faucet handle is in open position	-Open the handle
	-Solenoid valve incorrectly connected to the sensor	-Ensure proper cable connection or replace the solenoid valve if faulty
	-Battery box incorrectly connected to the solenoid valve	-Ensure full cable connection or replace battery box
	-Weak or drained batteries	-Replace with 4 new AA batteries
	-Batteries installed with incorrect orientation	-Install batteries with the correct orientation
	-Sensor blocked by nearby item	-Ensure no items are placed or installed within 10" of the sensor
Water is not coming out using faucet manual mode? Hot or Cold water not coming out?	-Dirty sensor window	-Clean the sensor window with a damp cloth
	-Shut off valve(s) are not fully open	-Open both hot and cold water valves fully
	-Supply hoses are kinked, excessively curved, or twisted	-Reinstall hoses, removing any kinks or twists
	-Home water supply issues (low pressure or flow)	-Inspect and address home plumbing issues
	-Defective cartridge	-Replace cartridge
	-Solenoid valve is not set to manual mode	-Adjust the solenoid valve knob to manual mode
Reduced water flow	-Calcium buildup in the spout head	-Clean the spout head aerator
	-Defective spout head or flow restrictor blockage	-Detach the spout head, clean or remove the flow restrictor, and reattach it
	-Kinked or twisted supply hoses	-Reinstall hoses to remove kinks or twists
	-Home water supply issues (low pressure or flow)	-Inspect and address home plumbing issues
	-Defective or dirty cartridge	-Remove the cartridge, check for debris, and replace if necessary
	-Calcium buildup in the spout head	-Clean the spout head with a descaler like CLR
Spout head mixing the spray and stream mode	-Spout head button requires excessive pressure	-Apply firm pressure to the button to switch modes
Leaks from the handle	-Defective spout head	-Replace the spout head
	-Loose cartridge nut	-Tighten the cartridge nut after removing the handle
	-Loose spout head	-Hand-tighten the spout head
Leaks in spout head connection	-Missing gasket between the spout head and pull-out hose	-Install a gasket
	-Cracked spout head threads	-Replace the spout head
	-Hose tip not fully inserted	-Perform a push-pull test to ensure the hose is securely connected
Leaks at quick connect (any of the 2 quick connects)	-Quick connect loose or missing gasket	-Add a gasket and tighten the quick-connect
	-Faulty quick-connect	-Replace the quick-connect
	-Damaged or missing O-ring at the hose tip	-Add or replace the O-ring
	-Damaged or missing supply hose gasket	-Replace the supply hose
Leaks at the supply hose to shut off valves	-Excessive torque applied to the connector nut	-Replace the supply hose and ensure the nut is snug, avoiding overtightening
	-Loose supply hose nut (not seated)	-Tighten the supply hose nut
Leaks under the cabinet without clear source	-Faucet base is not securely tightened to the countertop	-Ensure the faucet base is firmly secured, with the O-ring properly seated
Leaks from inside faucet base	-Defective hoses or inlet pipes (issue likely occurs with newly installed faucets)	-Tighten hoses or pipes; replace the faucet if the issue persists
Leaks at the spout head (button or body)	-Damaged or defective spout head	-Replace the spout head

#### WARRANTY

Lifetime Warranty on the faucet's structure and finish  
5-Year Warranty on all mechanical and electrical components.

BATTERIES ARE NOT INCLUDED, THE FAUCET REQUIRES 4 AA BATTERIES TO OPERATE TOUCHLESS SENSOR.

Stylish International Inc.

Follow us on Instagram! Check out and let us know your comments  [stylish.international.inc](https://www.instagram.com/stylish.international.inc)

Products and specifications shown are subject to change without notice. Please contact our technical support at [care@stylishkb.com](mailto:care@stylishkb.com) for any further queries, replacement parts requests, etc. ©2021 Stylish® all right reserved.