

BEFORE YOU BEGIN YOUR INSTALLATION



Shut off water supply



Flush hot and cold water supply lines



Required tools



Installation by License Professional Plumber



Flush the water pipe before installation



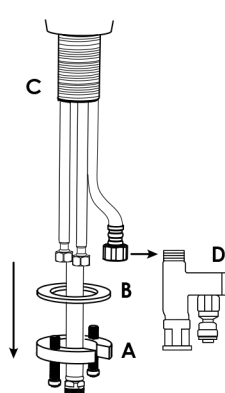
Drawings are for reference only



Do not disassemble the body

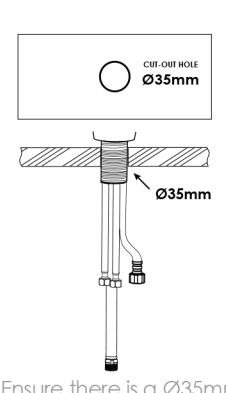
FAUCET INSTALLATION

1



Remove the mounting nut (A) and washer (B) from the threaded shroud (C). Remove RO Connector (D).

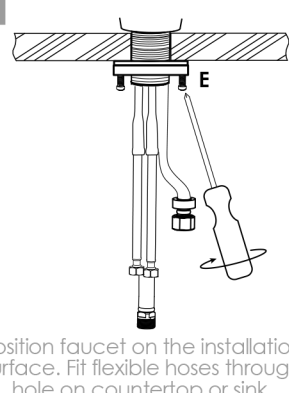
2



Ensure there is a Ø35mm through-hole on the kitchen counter.

Position faucet on the installation surface. Fit flexible hoses through hole on countertop or sink.

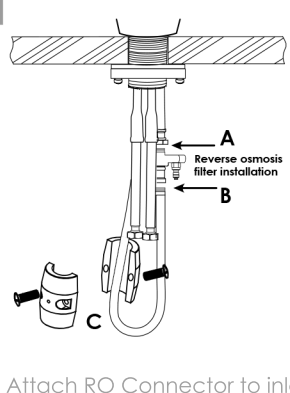
3



Position faucet on the installation surface. Fit flexible hoses through hole on countertop or sink.

Slide washer and thread the mounting nut onto threaded shroud. Turn faucet to desired handle position. Securely tighten clamp screws (E).

4

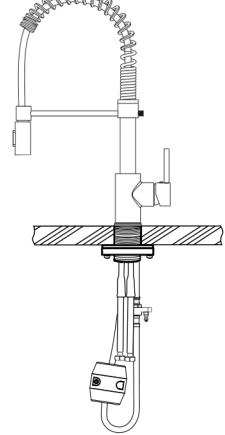


(A) Attach RO Connector to inlet port. Ensure gasket is present.

(B) Connect pullout hose to quick connect.

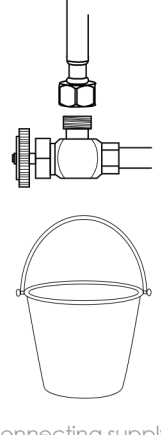
(C) Insert weight (loose install).

5



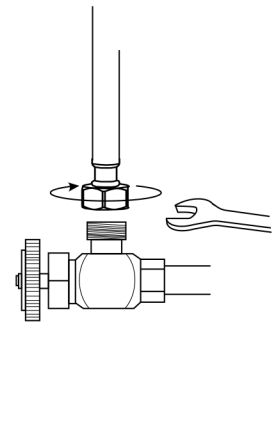
Secure weight on lowest vertical point on pull-out hose side. (not on quick connect side).

6



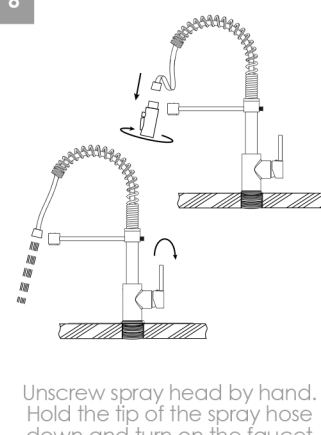
Before connecting supply hose, flush supply valves to clear any debris. Place a bucket underneath valves and run water for 5 to 10 seconds. Turn water off.

7



Connect hot and cold water lines to the inlet pipe and tighten with a wrench until snug. Do not over tight.

8



Unscrew spray head by hand. Hold the tip of the spray hose down and turn on the faucet and let the water run 60 seconds to flush any debris, the re-connect spray head. Ensure gasket is present.

CARE AND CLEANING

Clean the faucet frequently using mild soap or an on-abrasive cleaner and then quickly rinse with water and dry with soft cloth only.

Using abrasive cleaners, solvents, acid cleaners or any scrubbing detergent, polisher or scraper will damage the finish and void the warranty.

WARRANTY

For additional technical assistance or for any questions or concerns about your kitchen faucet's warranty, please contact us.

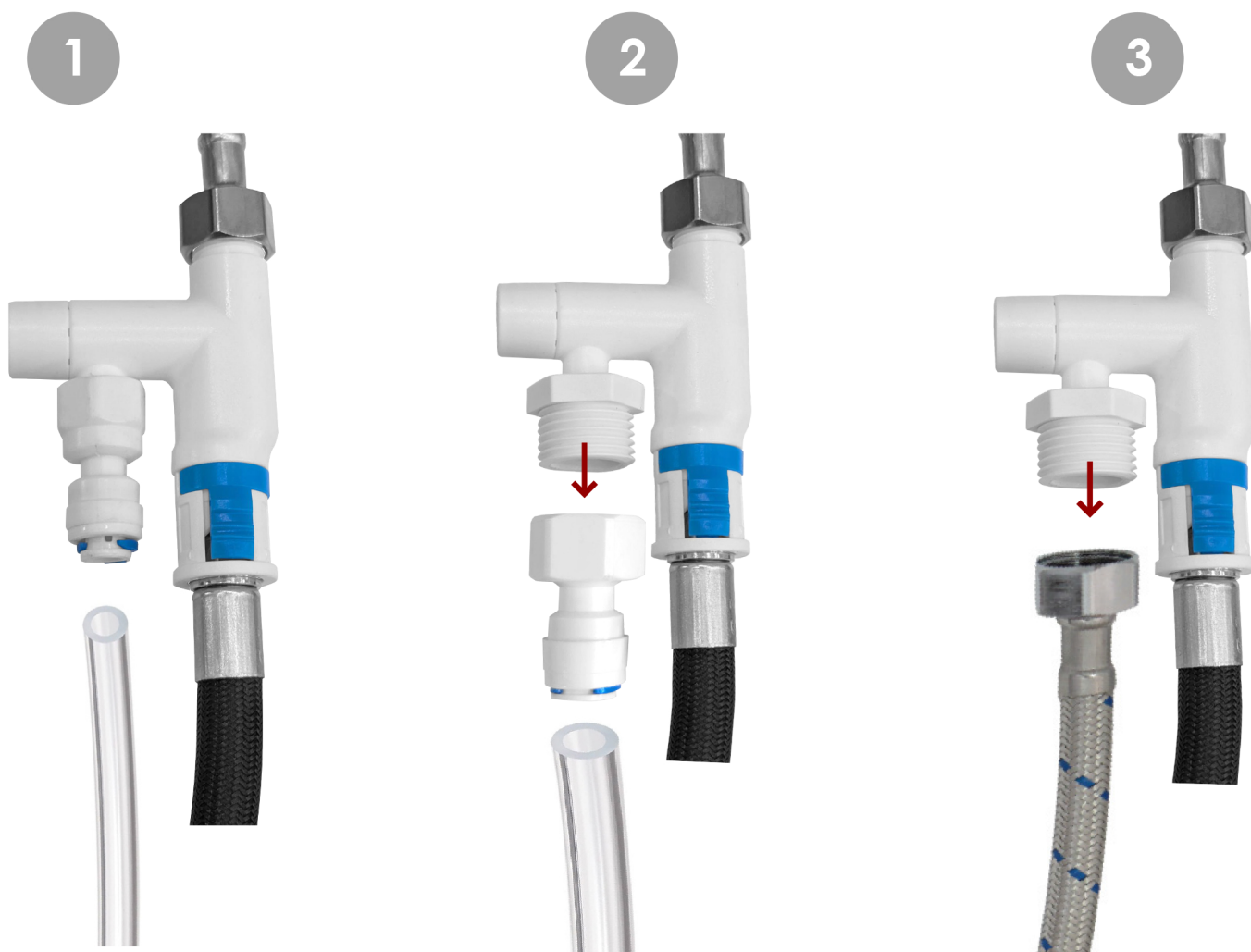
 www.stylishkb.com

 care@stylishkb.com

www.stylishkb.com/warranty

 +1-855-789-5352

WATER FILTER CONNECTION OPTIONS



This faucet offers multiple connection options as shown in diagram

1. 1/4 inch hose to shark bite
2. 3/8 inch hose to shark bite
3. 1/2 inch to male connector (compression hose no included)

IMPORTANT: This faucet model offers the option to connect to an RO (Reverse Osmosis) filtered water system. This feature is **OPTIONAL**; if not used, the faucet can still function as a regular faucet without the RO system. If you have any questions, please feel free to contact our friendly customer support at 1-855-789-5352