

# COMPOSITE DECK TILE EDGE AND CORNER TRIM Installation Guide

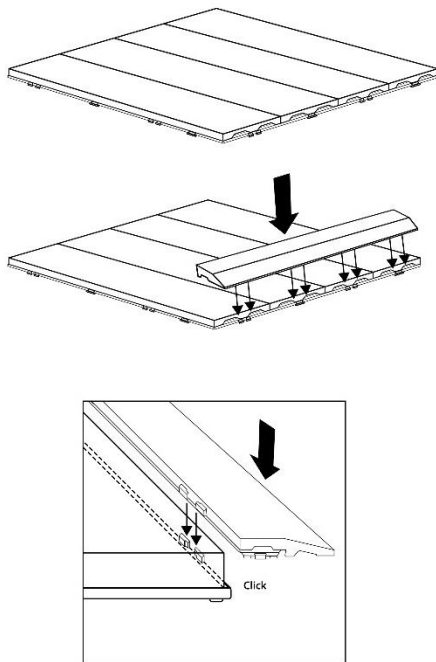
PLEASE KEEP FOR FUTURE REFERENCE

Follow the instructions in the Composite Deck Tile installation guide for installing deck tiles, until the desired surface is covered.

After completing the Composite Deck Tile installation, ensure that the exposed edges are properly finished using Composite Deck Tile Edge and Corner trims (sold separately).

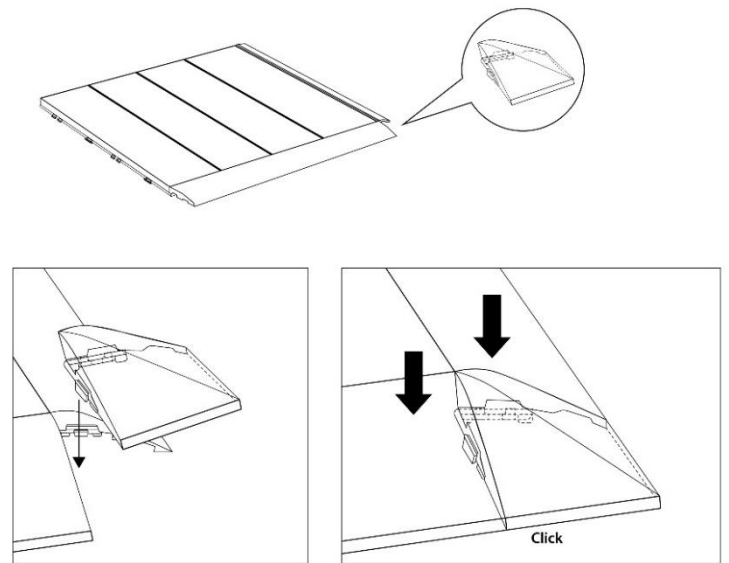
## STEP 1 – Installation of the Composite Deck Tile Edge Trim

Position the Composite Deck Tile Edge Trim in its designed place, aligning the interlocking connectors with the Composite Deck tile, as shown in the illustration below. Then, press down hard to secure it in place with the Deck tile. Complete installation step 1 for all exposed edges.



## STEP 2 – Installation of the Composite Deck Tile Corner Trim

Position the Composite Deck Tile Corner Trim in its designed place, aligning the interlocking connectors with the Edge trims, as shown in the illustration below. Then, press down hard to secure it in place with the Edge trims. Repeat this step 2 for all exposed corners of the deck to complete the installation.



## CARE AND MAINTENANCE

- **Remove stains:** Most stains will be rinsed away with water and regular WPC cleaning products.
- Do not spray cleaning products and/or chemicals that are not safe for WPC products.
- Do not drive vehicles on top of the Composite Deck Tile Edge and Corner Trims.
- Do not walk on the Composite Deck Tile Edge and Corner Trims with athletic cleats.
- If the Composite Deck Tile Edge and Corner Trims are exposed to animal waste or urine, **immediately** remove the waste and rinse the area thoroughly with water.

## **WARRANTY**

J. Sonic Services warrants to the original residential purchaser that, for a period of five (5) years from the date of original purchase, under normal residential use and service conditions, the Composite Deck Tile Edge and Corner Trims shall not split, rot, or suffer structural damage resulting from termites. Replacement material will be provided that is as close as possible in color, design, and quality as the replaced material, but J. Sonic Services does not guarantee an exact match as colors and design may change.

The following conditions apply to the warranty and may void the warranty if not followed correctly:

- The Composite Deck Tile Edge and Corner Trims must be installed according to the instructions provided by the manufacturer.  
The owner must follow the care and maintenance guidelines.
- If filing a warranty claim it must be submitted within 30 days of the discovery of manufacturer's defect.
- Proof of purchase, such as a bill of sale is mandatory when requesting warranty service.
- The manufacturer reserves the right to designate a representative to inspect the product in question and remove samples for analysis.
- The warranty includes the replacement material, but exclude shipping costs, labor costs and any other secondary costs.
- The warranty applies only to the original purchaser and is non-transferable.
- The warranty only applies if the Composite Deck Tiles Edge and Corner Trims are applied appropriately in a residential environment.

## **WARRANTY EXCLUSIONS**

The warranty does not cover any damages or defects caused by:

- Improper installation of the products and/or failure to abide by the installation guidelines.
- Use of the products beyond normal use and service conditions, or in an application not recommended by the guidelines and local building codes.
- Movement, distortion, collapse or settling of the ground or the supporting structure on which the products are installed.
- Force majeure, acts of God and environmental conditions.
- Staining from foreign substances (such as dirt, grease, oil, etc.) or weather conditions (defined as harsh exposure to sunlight, weather and atmosphere which will cause any colored surface to gradually fade, chalk, or accumulate dirt or stains).
- Slight variations or changes in color of the products.
- Improper handling, storage, or neglect of the products by the purchaser.
- Decay caused by fasteners.
- Ordinary wear and tear.

J. Sonic Services disclaims liability for any direct or consequential harm or injuries associated with the use of this product resulting from its improper use or installation.

For any question, please contact our Customer Service Department by email at [info@jsonic.ca](mailto:info@jsonic.ca) or by telephone at 1-833-540-2118.