

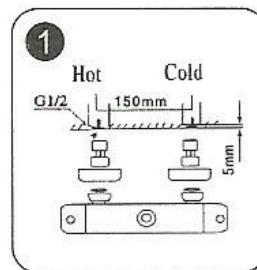
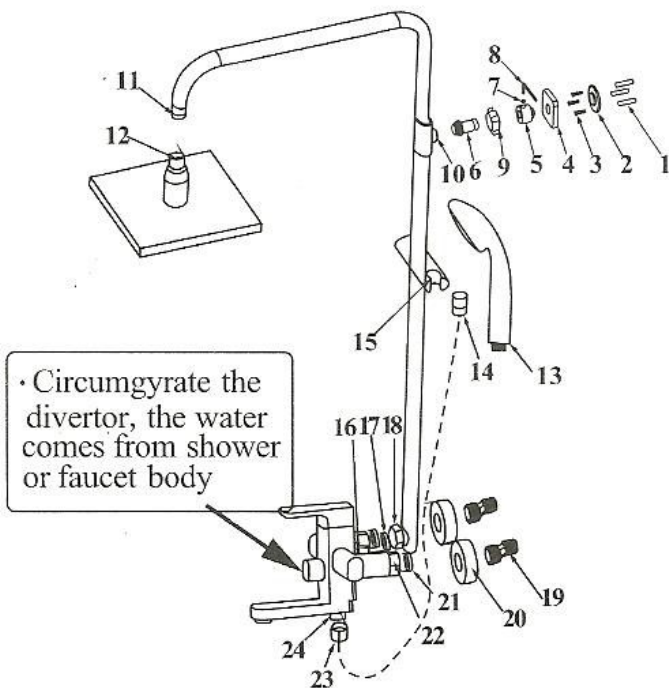
# Instruction Paper

Enjoy the water

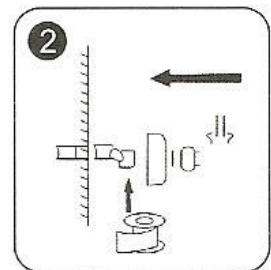
Shower Set & Shower Head

# Shower Set Installation Steps I

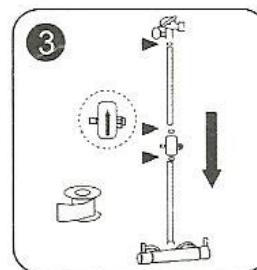
1. Connecting the connector(19)to the cold &hot water outlet.
2. Fix the washer(17)into the part(18)&screw it with part(16).
3. Screwed the decorative cup(20)with the connector(19),fix the washer(21)  
Screw it with the connector(19).
4. Fix plastic pin(1)into the wall, screw the screw(3)through the part(2)into plastic pin(1)respectively.
5. Screw the part(5)through the decorative cap(4)into the part(2).
6. Screw the part(6)into the part(10)and screw the part(9)into part(6).
7. Put the part(6)into the part(5)and screw the part (7)into the part with the wrench(8).
8. Screw the hand shower(13)into the part(14)and put it into the part(15).
9. Screw the part(23)into the part(24).
10. Screw the shower head(12)into the part(11).



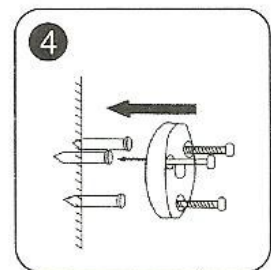
1. Fix hose inside the wall:  
The diamer of hose is G1/2



2. Joint units with using hermetically band.



3. You must fix rubber gasket when joining tube. avoid leaking. by using hermetically band.



4. Drill three holes with 30 mm depth 3 Φ 6mm on the wall.



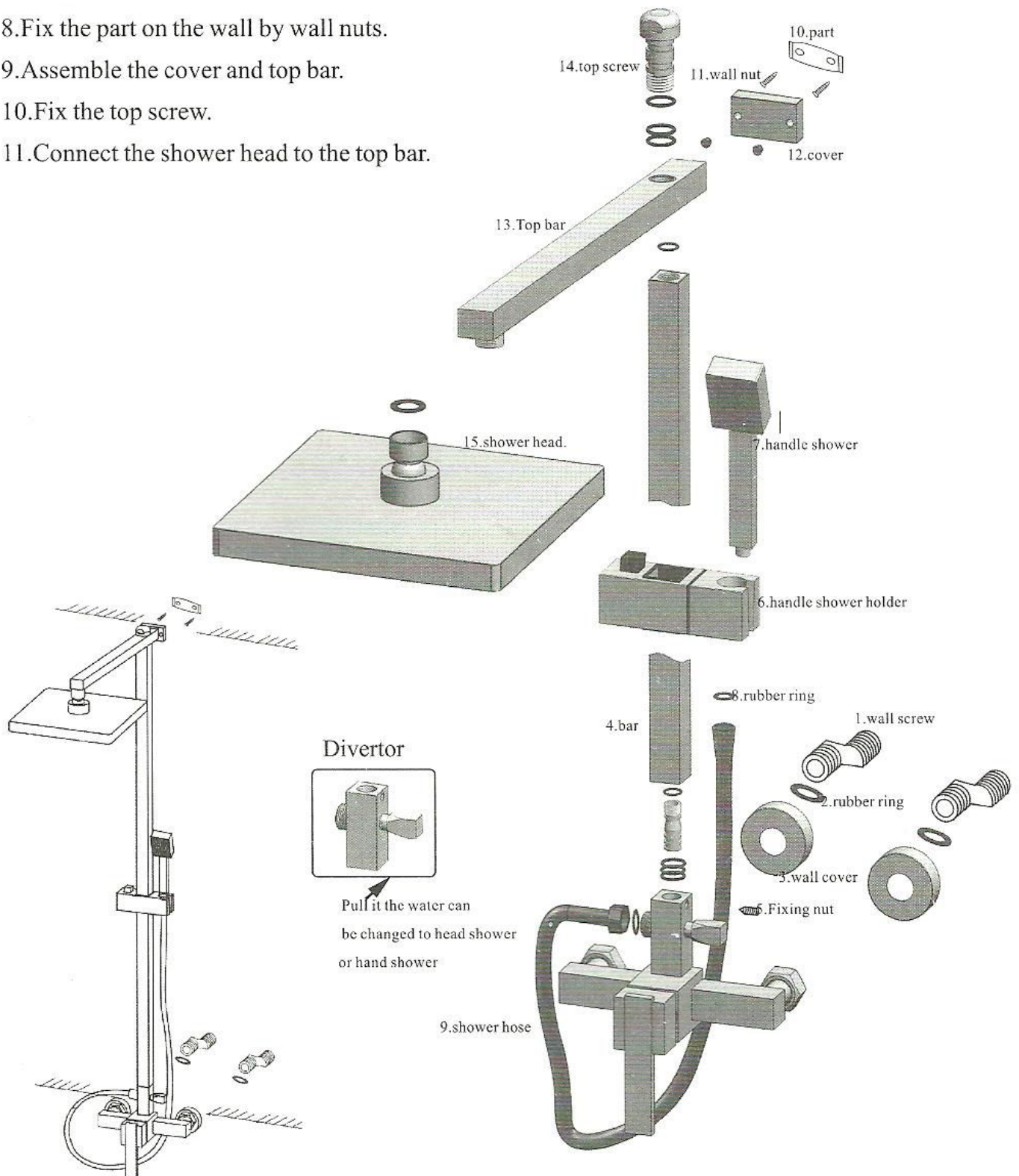
5. Joint tube, shower header and main set with using hermetically band.

## Maintenance:

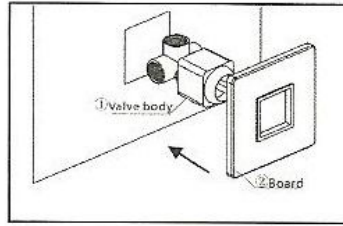
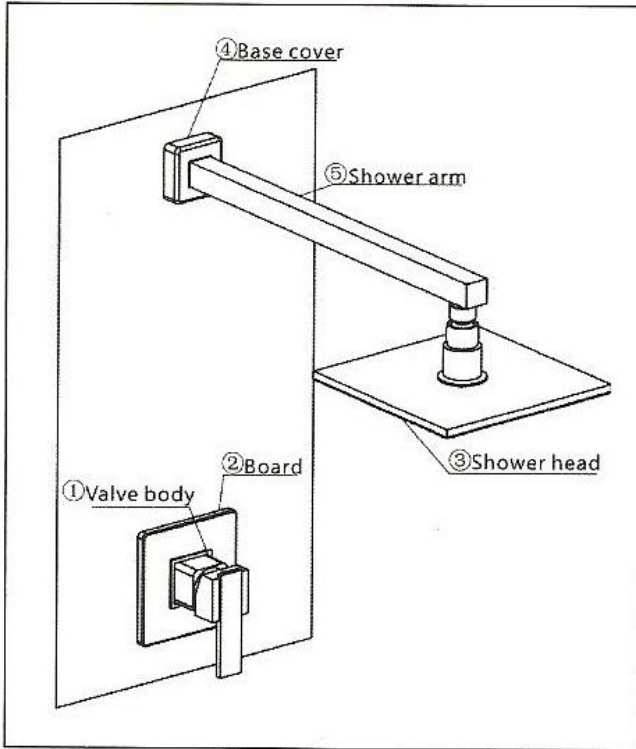
- Use clean water to wash the faucet, use a soft cloth or leather wipe.
- Don't use acidic washing liquid or abrasive materials to wash the faucet.
- Unscrew and clean the aerator regularly.

# Shower Set Installation Steps II

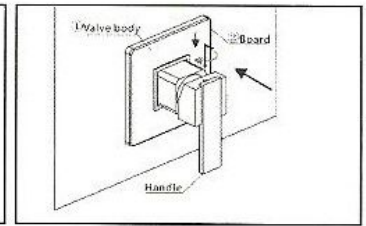
1. Before installing the shower, flush lines to eliminate any dirt that may have accumulated in the pipes.
2. Assemble the wall screw on the wall, put the rubber ring and wall cover on the wall screw.
3. Connect the wall screws to the faucet body.
4. Put the O-shape rubber washer on the fixing nut.
5. Fix the bar on the faucet body, and assemble the fix nut.
6. Put the handle shower holder on the bar.
7. Connect the handle shower to the shower hose.
8. Fix the part on the wall by wall nuts.
9. Assemble the cover and top bar.
10. Fix the top screw.
11. Connect the shower head to the top bar.



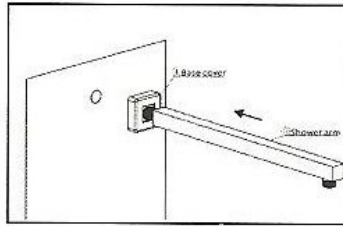
# Concealed Shower Set Installation III



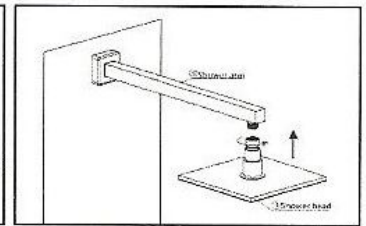
1. Loosen and take apart handle from valve body ① by screw driver.



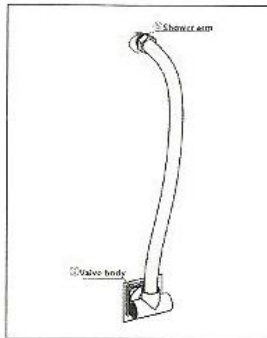
2. Put valve body ① in the wall first. And then, install board ② and handle the valve body ① according to the figure. Adjust the depth to let board ② snap the surface of the wall as far as possible.



3. Let shower arm ⑤ thread base cover ④ on the wall.



4. Screw shower head ③ onto the shower arm ⑤.



5. Connect the water outlet of faucet body ① and shower arm ⑤ by lines (not provided).

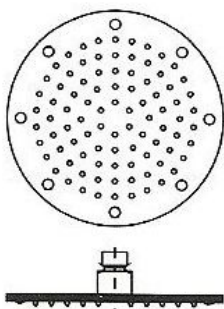
## Tips:

1. Before installing the faucet, flush lines to eliminate any dirt that may have accumulated in the lines.
2. Get ready for the lines for water inlet according to the products you bought.

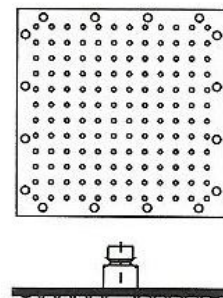
## Tips:

- A. Turn handle to closed site and turn on the water inlet valve, check all interface has leak or not.
- B. Turn handle to max site, check hose and the connection of valve body have leak or not.

## Shower Head Instruction:



- |               |               |
|---------------|---------------|
| Size: 10*10cm | Size: 30*30cm |
| Size: 15*15cm | Size: 35*35cm |
| Size: 20*20cm | Size: 40*40cm |
| Size: 25*25cm | Size: 50*50cm |



## Led Shower:

No battery, power from water pressure, the LED color can be changed by water temperature:

0-30°C	Blue LED
31-40°C	Purple LED
41-50°C	Red LED
51-100°C	Flashing LED

