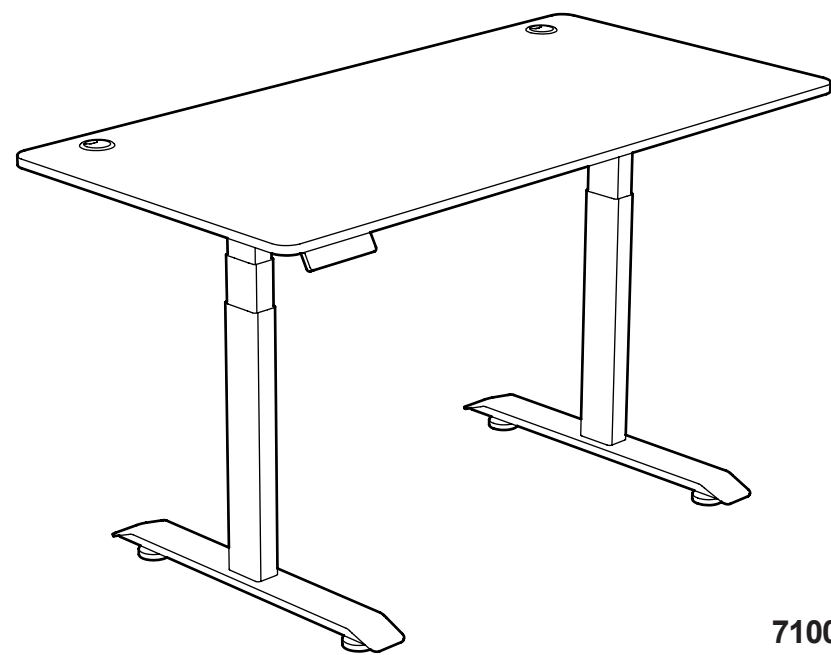




## Electric Height Adjustable Desk Assembly & Use Instructions



**Thank you for your purchase!**  
Please do not return this unit to the store - We are happy to help!  
1-800-984-9933 (8am - 5pm EST)  
info@AlgreenProducts.com



71000 | 72000  
71201 | 71311 | 71401

### Caution / Information



Make sure no obstacles are in the desk's path. Make sure the desktop is not touching any walls. Make sure all cords are appropriate length to accommodate the change in height.

**WARNING**  
Pinch Point  
Keep hands and fingers clear

Keep children away from electric height-adjustable desks, control units and handsets. There is a risk of injury and electric shock

Keep all electrical components away from liquids.

Do not sit or stand on the desk frame. Do not crawl or lie under the desk frame.

Do not place any objects taller than 20" underneath the desk.

Do not open any of the components ---the Legs, Control Box, or Switch. There is a danger of electric shock.

This product is designed with a duty cycle of 10%. (2 min. on, 18 min. off)

In the event of a power outage or if the power cord is unplugged, a manual reset may be necessary--see Step 13.

### Use/Liability

This height adjustable desk has electric motors and is designed for use in dry work areas only.

The desk height is adjustable so that it can be positioned at the most ergonomically suitable height.

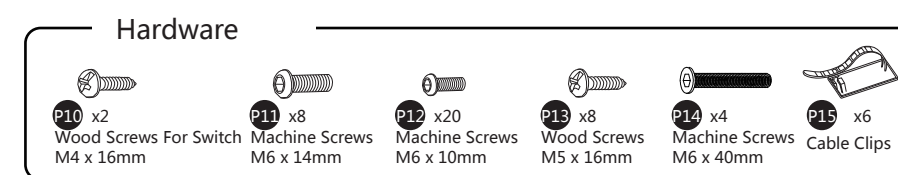
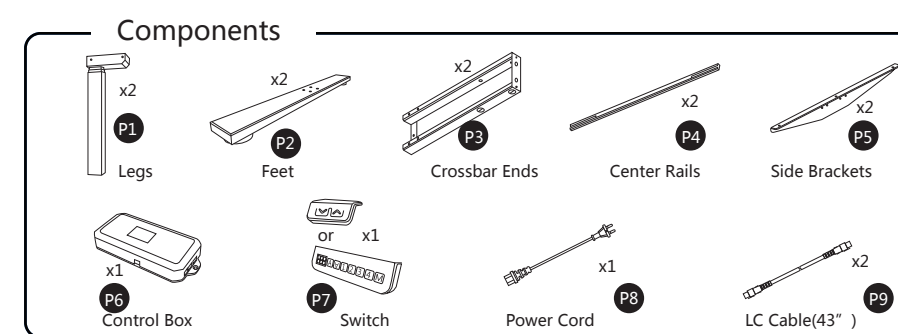
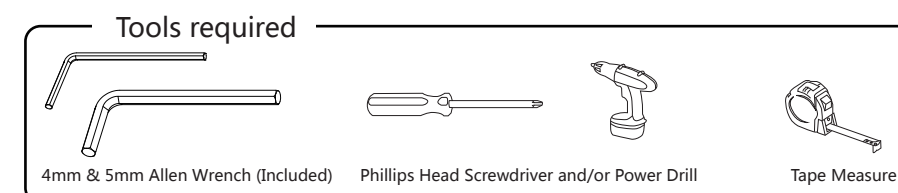
Any other use is at user's risk.

Under no circumstances does the manufacturer accept warranty claims or liability claims for damage caused from improper use or handling of the desk frame.

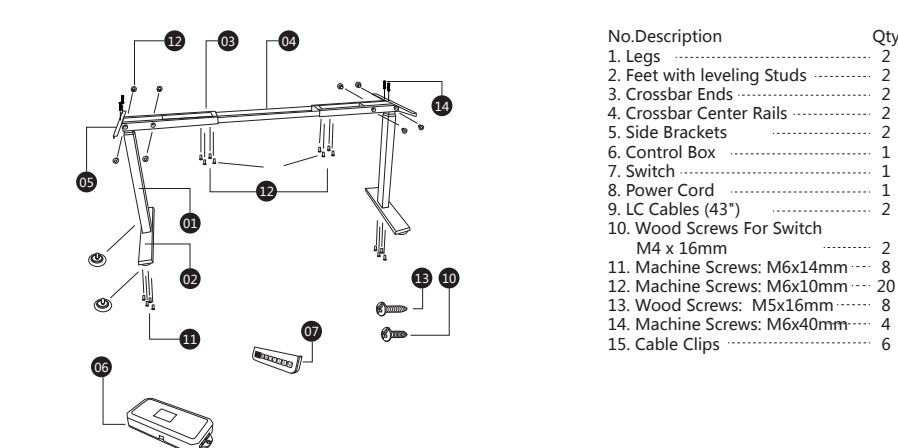
Important:  
Please read this manual carefully.

page 2

### Parts



### Hardware



page 3

### Assembly Instructions

- Lay out all components and hardware to ensure that you have all the components and hardware listed on the parts page.  
Fully separate the Crossbar Ends (P3). You will find the Crossbar Center Rails (P4) inside.
- Position one of the Crossbar Ends (P3) on its side.  
Place one of the Legs (P1) into the Crossbar End (P3) ensuring that the bar (arrow) is on "top" in relation to the Leg (P1).  
Line up the holes on each Leg (P1) with the holes on each Crossbar End (P3).
- Using the supplied Allen Wrench, insert four(4) M6x10 Machine Screws (P12) through the holes in each Crossbar End (P3) going into the Leg (P1) and rotate each screw just a few turns.  
You will need to flip the assembly over to gain access to all four(4) M6 x 10 machine Screws (P12). Repeat Step 3 with the other two assemblies.  
  
**!** Do not tighten the screws at this point.  
**i** If you drop a screw inside the Crossbar End (P3), simply tilt to retrieve the screw.
- Prop up one of the assemblies from Step 3, as shown. Using the supplied 4mm Allen Wrench, through the two holes in the top of the side bracket (P5), insert two(2) M6 x 40 Machine Screws (P14).  
  
**i** If you are having difficulty inserting any of the screws from Step 3 or 4, it is because some of the installed screws are too tight.  
Now tighten all the screws from Step 3 and Step 4.

page 4

### Assembly Instructions

- Adjust the width for your tabletop before lock the position of Crossbar Center Rails (P4) using eight (8) M6 x 10 Machine Screws (P12).  
Remember, maximum width is 70 1/4".
- Double-check that the wood screws are NOT longer than the desktop thickness and won't puncture the surface when screwed all the way in.  
We recommend that you pre-drill any holes needed for fasteners connecting the Control Box (P6) or Switch (P7) to the desktop (if your desktop is not pre-drilled). Never use countersunk screws.  
Double-check that the desk base is properly positioned on the underside of the desktop.  
Attach the 2-leg desk base assembly to the underside of the desktop using eight (8) M5x16 Wood screws (P13):  
2 per Side Bracket (P5)-- 4 total  
1 per Crossbar End (P3)--2 total  
Control Box(P6)--2 total  
  
The Switch may be placed anywhere along the front edge of the desktop but we recommend placing it toward an end so it does not interfere with your chair when seated. Use two (2) M4 x 16 Wood Screws (P10) to attach the Switch to the desktop.  
**!** Do not over tighten screws in this step. Overtightening could cause damage to the components.
- Connect the : LC Cables (P9), Switch Cable (P7), and the Power Cord (P8) to the Control Box (P6) as per the diagram. Use the adhesive-backed Cable Clips (P15) to secure the Cables and Switch cable so they don't sag.

page 6

### Assembly Instruction

- For the two (2) assemblies that will be the outer legs of the desk base, attach a Foot (P2) with four (4) M6 x 14 Machine Screws (P11) and tighten screws in a cross pattern.
- Slide the two (2) Crossbar Center Rails (P4) into the two Crossbar Ends (P3) ensuring:  
A)the slots in the Center Rails (P4) face inward  
B)the slots in the Center Rails (P4) are closer to top edge when the assembly is upside down (see inset).
- The minimum desk top size that should be used is: 43" wide x 24" deep  
Your desktop may or may not be pre-drilled. Check both sides of the desktop before placing your desk base on the underside of the desktop.  
  
For desktops that are not pre-drilled, adjust the width of the 2-legs in the desk base assembly to fit the desktop by sliding the two halves outward (39 1/4" - 70 1/4").  
We recommend leaving at least 1/2" of the desktop width (on each end) protruding beyond the frame width and centering the side brackets left and right.

page 5

### Assembly Instructions

- Turn the assembled desk right-side-up. With at least two people grab the Desk Base (not the desktop) and turn the desk right-side-up. Adjust the pre-installed Leveling Studs on the Feet (P2)
- Plug the Power Cord (P8) into a 110V outlet.  
**!** Make sure no obstacles are in the desk's path. Make sure the desktop is not touching any walls. Make sure all cords are appropriate length to accommodate the change in height.  
Important: You must Reset the desk prior to use.  
**How to Reset**  
Reset Procedure: Press and hold the DOWN button on the Switch (P7) until the desk reaches its lowest height. Release the DOWN button. Press and hold the DOWN button again until the LED display reads "RST". Release the DOWN button. Press and hold the DOWN button again until the desk lowers a little bit more, slightly rises and stops. Release the DOWN button. Your desk is now ready to use.  
To program up to four presets (on some models): Use the up/down buttons to find a desired height, then press "M" followed by a number 1--4.  
Caution: Once a preset button is pushed, the desk will move to the programmed height (see caution box above).
- Troubleshooting**  
If your desk is not functioning properly it may need to be reset. Unplug the power cord for 20 seconds. Plug the power cord back in and follow the RESET procedure outlined in Step 12.  
If the LED readout displays "RES" (reset), perform the reset procedure outlined in Step 12.  
If the LED readout displays an error message ( "E02" -- "E60" ) confirm that all wired connections are secure (legs to cables, cables to control box). Then perform the reset procedure outlined in Step 12.  
If the error message persists after the reset procedure, or if the height between the legs exceeds 1.5" , stop the reset procedure & contact Algreen at info@algreenproducts.com.  
If the handset displays "HOT" , let the base cool down for 20 minutes.

### 14. Technical Specifications

Height Range	25 3/8" - 51 3/8"
Base Width	39.75" min - 70.75" max
Travel Speed	0.7" per second (no load)
Weight Capacity	220 lbs.
Duty cycle	10%. Max. 2 mins on, 18 mins off
	Soft start/stop
	Adjustable leveling studs
	4 Memory presets

page 7