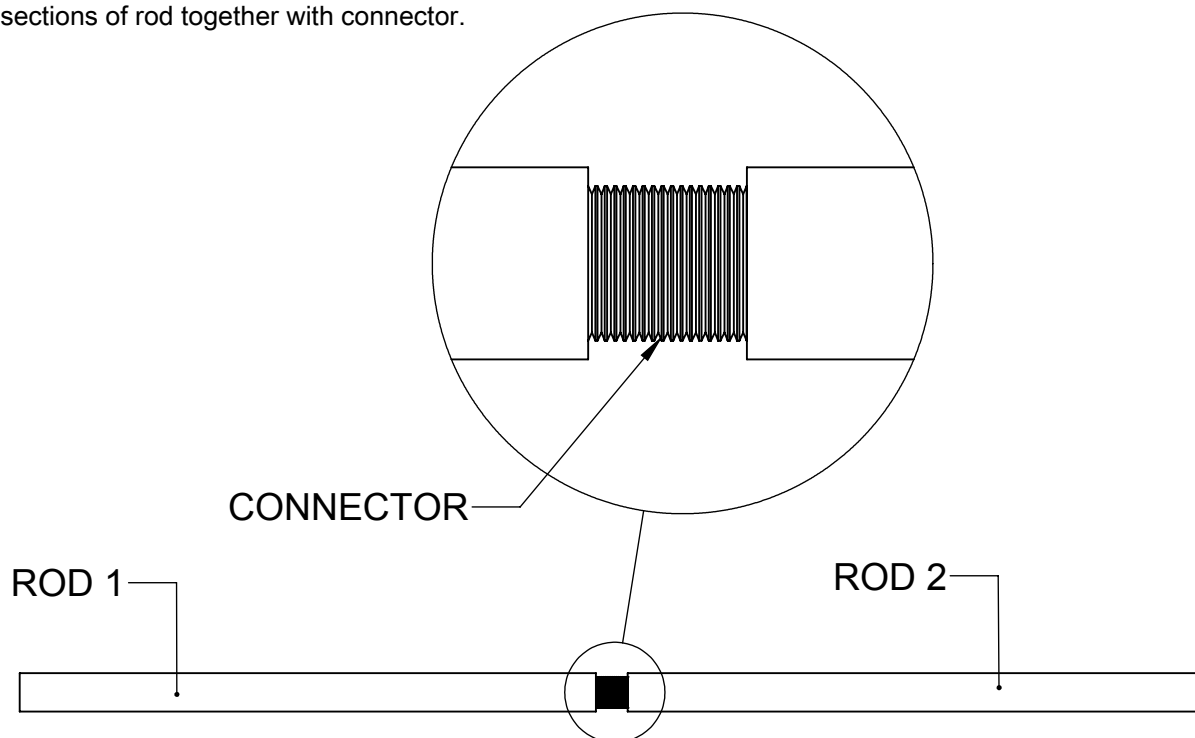


INSTALLATION INSTRUCTIONS

Step 1: ROD ASSEMBLY

Assemble two sections of rod together with connector.



Step 2: BRACKET ASSEMBLY

Measure opening of shower or tub enclosure and cut equal amount off each end of rod to match size of opening. Install rod into brackets (sold separately) as per bracket installation instructions.

