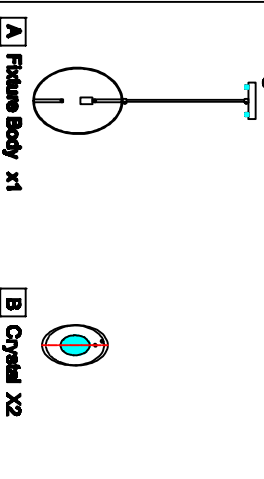


Assembly Instruction Sheet #HS-1224P8 For Style 1224P8

Tools Required: Flathead screwdriver, Phillips screwdriver, pliers, wire cutters, wire strippers, electrical tape, safety glasses.
Light Source: (1) G9 Bulb 40W Medium/Soft Incandescent.
Estimated Assembly Time: 15-30 minutes.
Preparation: Identify and inspect all parts before beginning installation. Check package content list and diagrams before to be sure all parts are present. If any parts are missing or damaged, do not attempt to assemble, install, or operate the fixture. Contact customer service for replacement parts.

Warnings and Cautions
 Turn off electricity at circuit breaker or main fuse box before installation. Consult a licensed electrician if in doubt. These instructions are provided for your safety. It is very important you read them completely before installing the fixture. We strongly recommend that a licensed, professional electrician perform the installation. Disconnect fixture from power source before replacing bulbs. Make sure bulbs are given sufficient time to cool before removal.

Package Contents



Hardware Contents

PART	DESCRIPTION	QUANTITY
AA	Decorative Cap	2pc
BB	Mounting Screws	2pc
CC	Outlet Box	1pc
DD	Mounting Bracket	1pc
EE	Green Ground Screw	1pc

STEP 1 - Attach Mounting Screws, Lock Washers and Hex Nuts to Mounting Bracket.
 A. Line up a set of holes on the Mounting bracket(EE) and Holes on the Backside. Thread Mounting Screws (BB) into the holes on the Mounting bracket (EE). Push Lock Washers and Thread Hex Nuts onto the Mounting Screws (BB). Hand tighten unit snug.

Figure 1

STEP 2 - Attach Mounting Bracket to Outlet Box
 A. Pass the supply wires through the Mounting bracket (EE). Attach the Mounting bracket (EE) to the Outlet Box with the head of the Green Ground Screw facing you. Secure it with Outlet Box Screws. Tighten unit snug.

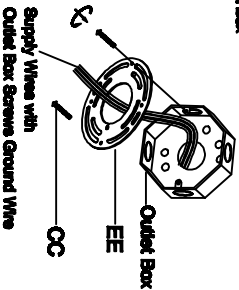


Figure 2

STEP 3 - Fit Backside to Mounting Bracket Assembly
 A. Fit the backside to Mounting Screws (BB) and secure with Decorative Caps (AA). Note: The backside should be snug against the coating and the Decorative Caps (AA). If not, adjust the length of the Mounting Screws (BB) by unscrewing the Hex Nut and Lock Washer and then screwing Mounting Screws (BB) in or out of the Mounting bracket (EE) until the correct length is achieved. Once the Ceiling Canopy is secure, remove the Decorative Caps (AA) and Ceiling Canopy and proceed to step 4

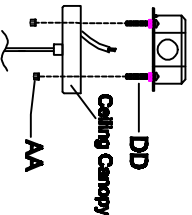


Figure 3

STEP 4 - Wire Connections
 A. Use standard wire connectors to make all wire connections. Twist connections until wires are tightly joined together. Wrap each connection with approved electrical tape and carefully seal all the connected wires into the Outlet Box.

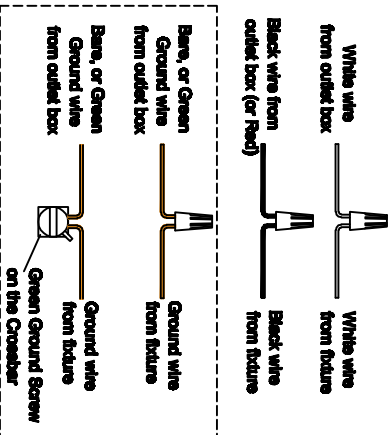


Figure 4

STEP 5 - Install Ceiling Canopy to Ceiling
 A. Carefully tuck all wires into the outlet box and position the Ceiling Canopy of the Fixture Body (AA) over the outlet box. Align the holes in the Ceiling Canopy with the Mounting Screws (BB). Secure with Decorative Caps (AA) and hand tighten unit snug.

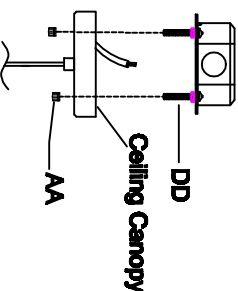


Figure 5

STEP 6 - Install Crystal and Bulbs.
 A. Install bulbs into sockets and push snug into piece.
 B. Put the Crystal to the Fixture's Body. The frosted Crystal faces the light source.

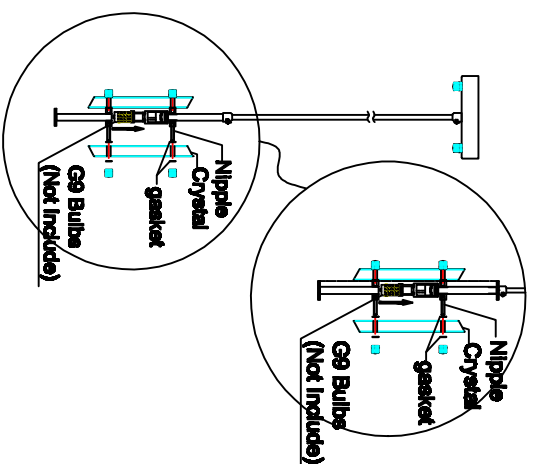


Figure 6