

# Assembly Instruction Sheet #IS-1567C18-4 For Style 1567C18-4

**Tools Required:** Flathead screwdriver, Phillips screwdriver, pliers, wire cutters, wire strippers, electrical tape, safety glasses.  
**Light Source:** (4) SUGGESTED LED E26 BULB MAX 9W (Not Include).

**Estimated Assembly Time:** 20-30 minutes  
**Preparation:** Identify and inspect all parts before beginning installation. Check package content list and diagrams below to be sure all parts are present. If any parts are missing or damaged, do not attempt to assemble, install, or operate the fixture. Contact customer service for replacement parts.

## ⚠ Warnings and Cautions

Turn off electricity at circuit breaker or main fuse box before installation. Consult a licensed electrician if in doubt. These instructions are provided for your safety. It is very important you read them completely before installing the fixture. We strongly recommend that a licensed, professional electrician perform the installation. Disconnect fixture from power source before replacing bulbs. Make sure bulbs are given sufficient time to cool before removal.

## Package Contents

- B Glass rod x200
- A Fixture Body x1
- D Fixture Body x1
- C Glass cover x1

## Hardware Contents

PART	DESCRIPTION	QUANTITY
AA	Screw	2pcs
BB	Electrical Nuts	2pcs
CC	Outlet Box Screw	2pcs
DD	Mounting Screw	2pcs
EE	Decorative Cap	1pcs
AA		
BB		
CC		
DD		
EE		

## STEP 1 – Attach Mounting bracket to Outlet Box

- A. Pass the supply wires through the Mounting bracket (EE). Attach the Mounting bracket (EE) to the Outlet Box with the head of the Green Ground Screw facing you. Secure it with Outlet Box Screws. Tighten until snug.

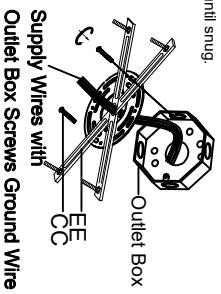
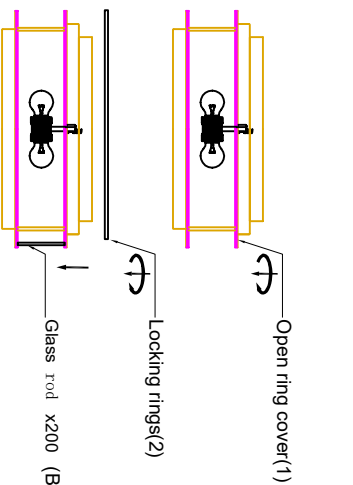


Figure 1

## STEP 2 – Fit Ceiling Canopy to Mounting bracket Assembly



## STEP 3 – Fit Ceiling Canopy to Mounting bracket Assembly

Fit the ceiling canopy to Mounting Screws (DD) and secure with Decorative Caps (AA). Note: The ceiling canopy should be snug against the ceiling and the Decorative Caps (AA). If not, adjust the length of the Mounting Screws (DD) by unscrewing the Hex Nut and Lock Washer and then screwing Mounting Screws (DD) in or out of the Mounting bracket (EE) until the correct length is achieved. Once the ceiling canopy is secure, remove the Decorative Caps (AA) and ceiling canopy and proceed to Step 4.

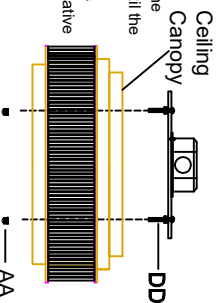


Figure 3

## STEP 4 – Wire Connections .

A. Use standard wire connectors (not included) to make all wire connections. Twist connectors until wires are tightly joined together. Wrap each connection with approved electrical tape and carefully stuff all the connected wires into the Outlet Box.

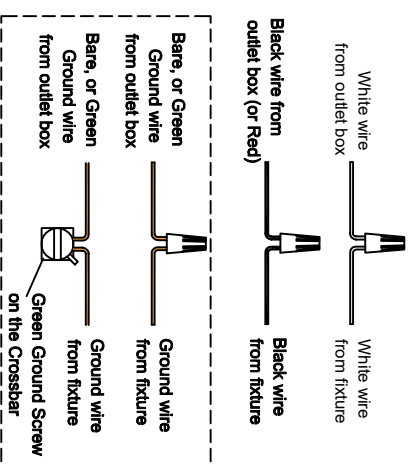
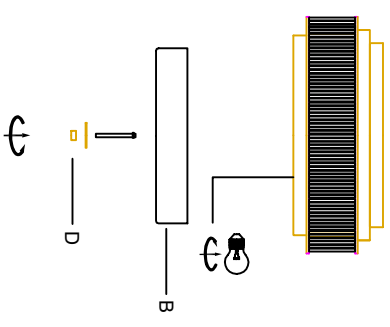


Figure 4

## STEP 6 - Install Glass Shade and bulb.



## STEP 5 – Install Ceiling Canopy to Ceiling .

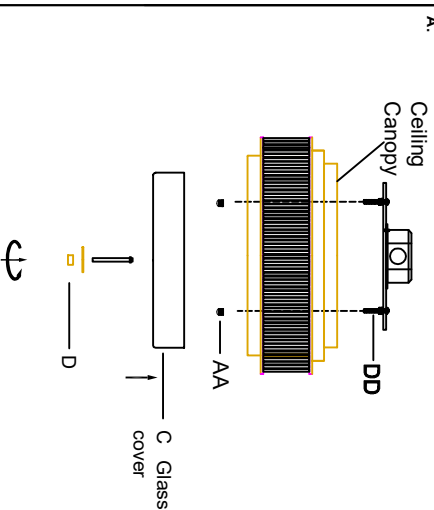


Figure 5

Figure 6