



**OLYMPIA FAUCETS, INC.**

Interchange City Distribution Center #20  
1277 Heil Quaker Boulevard  
La Vergne, TN 37086  
(888) 772-7701  
www.olympiafaucets.com

**Model Number: K-5440, K-5441 (CP, PVD BN, ORB)**

**Tools:**



Adjustable Wrench



Plumbers Putty



Teflon Tape



Rags

**INSTALLATION**

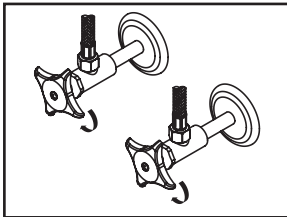


**Warnings and Notes:**

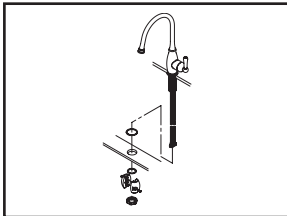
Check with local plumbing code requirements before installation.  
This product should be installed by a local listed plumber.  
**Do not use plumbers putty on threads.**

**Installation Steps:**

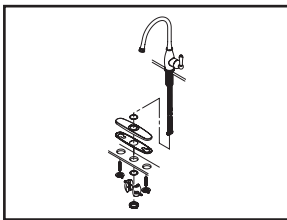
Single Handle Kitchen Faucet



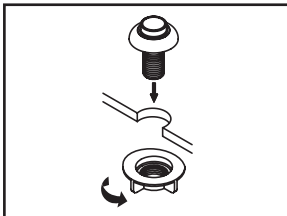
(1) Shut off water supplies. Remove old faucet. Clean mounting surface in preparation for new faucet.



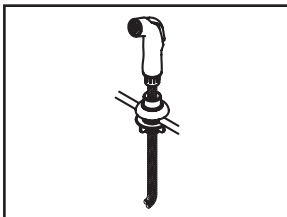
(2) **For 1-Hole Installation:-** Install 1-Hole mounting assembly on the faucet. Ensure there is a washer under the faucet. Place the faucet in position on the sink.



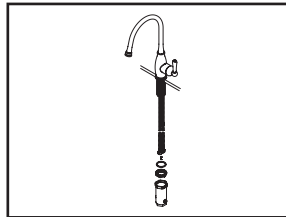
(3) **For 3-Hole Installation:-** Install supplied deck plate underneath of the faucet. Apply plumbers putty under the base gasket. Place the faucet in position on the sink.



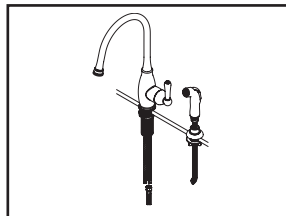
(4) For faucet with side spray, place spray holder on mounting hole. Tighten locknut from underneath of the sink.



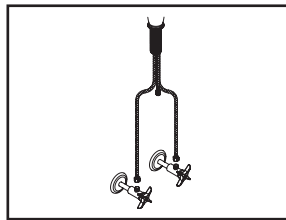
(5) Attach side spray to side spray hose, insert side spray hose down through spray holder.



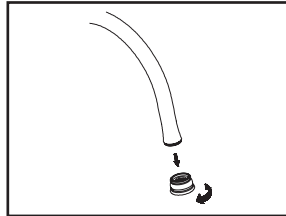
(6) With washer inside locknut, thread locknut onto faucet body from underneath of the sink. Tighten locknut with help.



(7) For faucet with side spray, attach side spray hose to faucet side spray port, hand tighten securely.



(8) Connect hot and cold inlet supply hoses to supply stops. For 1/2" connection; use 3/8" male to 1/2" female adapter for installation. Adapters are optional and not provided with the faucet.

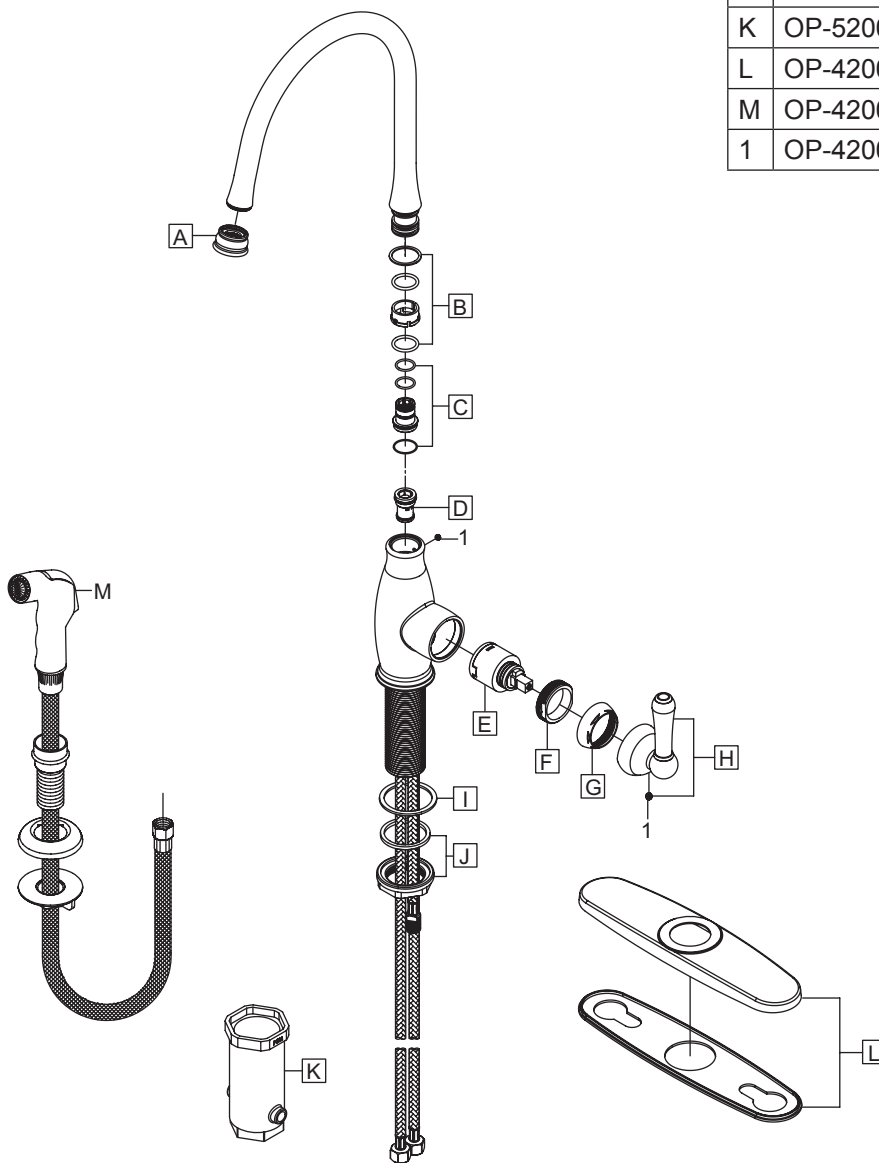


(9) Important: After installation is complete, remove aerator. Turn water supply on and allow both hot and cold water to run at least one minute each. While water is running, check for leaks. Replace aerator.

## Exploded Drawing:

\* Note: Please specify finish/color when ordering.

	ITEM #	DESCRIPTION
A	OP-420048*	1.5 GPM Aerator
B	OP-420041	Spout Swivel Repair Kit
C	OP-420049	Spout Repair Kit
D	OP-420024	Diverter Piston
E	OP-320002	Ceramic Disc Cartridge
F	OP-420042	Retainer Nut
G	OP-420043*	Retainer Cap
H	OP-120002*	Lever Handle
I	OP-420044	Washer
J	OP-520005	Locknut
K	OP-520012	Mounting Tool
L	OP-420045*	Deck Plate
M	OP-420038*	Side Spray Assembly
1	OP-420047	Allen Screw



**OLYMPIA**

For more care information or trouble shooting inquiries about your Olympia product, Please call:  
**OLYMPIA FAUCETS, INC.** (888) 772-7701  
 8AM - 8PM EST (5AM to 5PM PST)  
[www.olympiafaucets.com](http://www.olympiafaucets.com)