

An installation video guide can be found on our Youtube channel (Search for Savannah).

www.youtube.com/user/ovedecors1

Purchase date: _____

Product Tracking Reference: _____



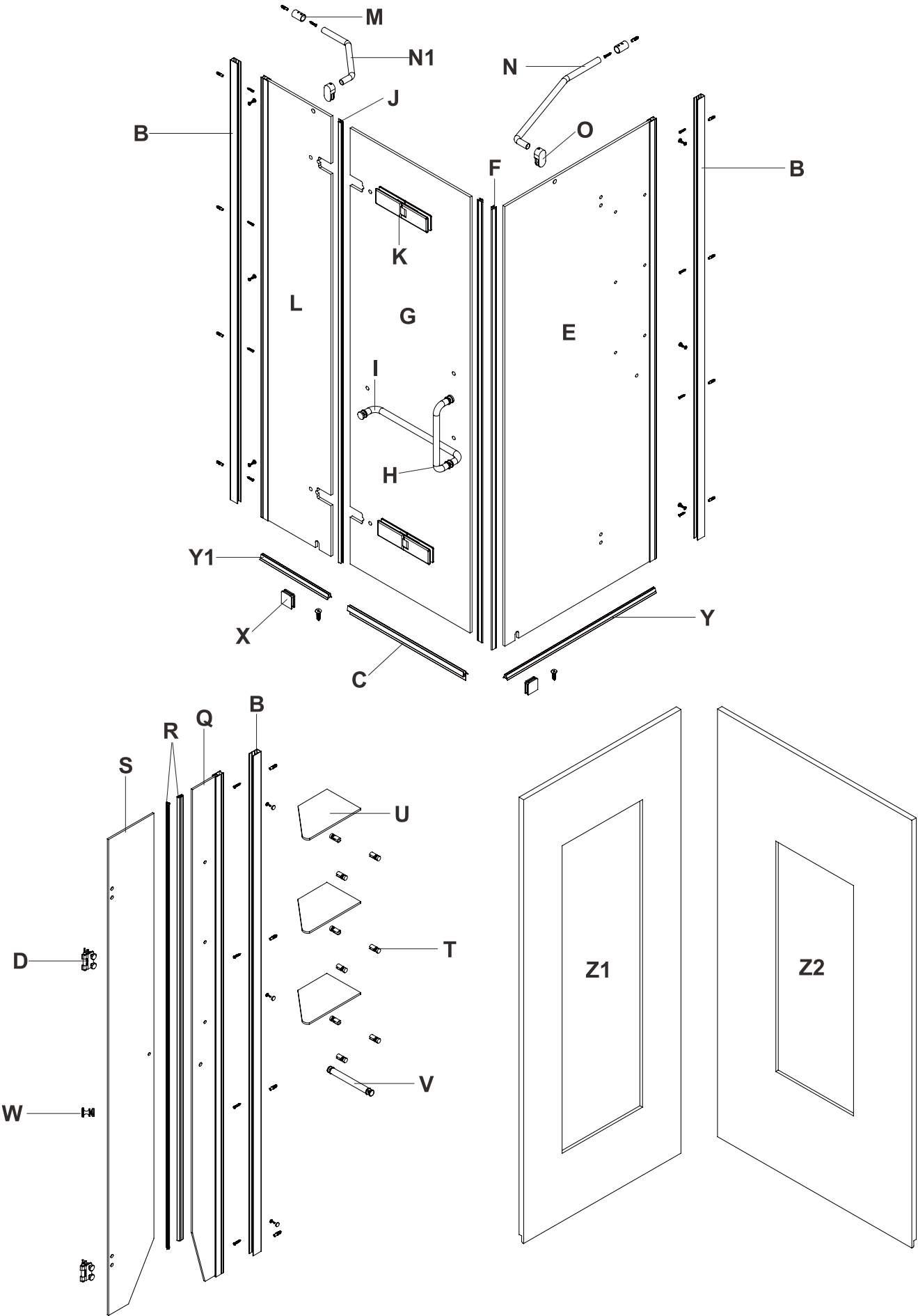
Questions, problems, missing parts?

Before returning to your retailer, call our customer service department at
1-866-839-2888, 9 a.m. - 5 p.m., EST, Monday - Friday

TABLE OF CONTENT

| | |
|--|----|
| PACKAGE CONTENT..... | 4 |
| HARDWARE CONTENT..... | 5 |
| TOOLS REQUIRED..... | 5 |
| SAFETY INFORMATION..... | 6 |
| PREPARATION..... | 6 |
| SHOWER REVERSIBILITY..... | 7 |
| BASE INSTALLATION GUIDELINES (OPTIONAL)..... | 8 |
| BASE AND ACRYLIC WALL INSTALLATION (OPTIONAL)..... | 9 |
| WALL TRACKS INSTALLATION..... | 10 |
| FIXED PANEL AND SIDE PANEL INSTALLATION..... | 11 |
| DOOR PANEL INSTALLATION..... | 12 |
| CABINET INSTALLATION..... | 14 |
| SUPPORT BAR INSTALLATION..... | 15 |
| HANDLE INSTALLATION & SEALING..... | 16 |
| CARE AND MAINTENANCE..... | 17 |
| LIMITED 5 YEARS WARRANTY..... | 17 |

PACKAGE CONTENT



PACKAGE CONTENT

| PART# | DESCRIPTION | QTY | CODE |
|-------|---|-----|--------------|
| B | Wall tracks | 3 | 99STR3613-WM |
| C | Bottom door rubber strip | 1 | 99SRU0093 |
| D | Cabinet hinges | 2 | 99SHI0014-WM |
| E | Side panel | 1 | 99SG10022-WM |
| F | Magnetic door seal strips | 2 | 99SRU0094 |
| G | Shower door | 1 | 99SGD0025-WM |
| H | External handle for the shower door | 1 | 99SHA1028-WM |
| I | Internal handle for the shower door | 1 | |
| J | Shower door vertical seal strip | 1 | 99SRU0095 |
| K | Shower door hinges | 2 | 99SHI0015-WM |
| L | Fixed glass panel | 1 | 99SG10023-WM |
| M | Support bar's anchors | 2 | 99SGC0020-WM |
| N | Long support bar | 1 | 99SGS0019-WM |
| N1 | Short support bar | 1 | 99SGS0020-WM |
| O | Glass panel's brackets | 2 | 99SGC0021-WM |
| Q | Cabinet fixed glass panel | 1 | 99SG10024-WM |
| R | Cabinet door magnetic strips | 2 | 99SRU0096 |
| S | Cabinet door | 1 | 99CGD0001-WM |
| T | Shelf supports | 9 | 99SGC0022-WM |
| U | Glass shelves | 3 | 99CGS0004-WM |
| V | Towel bar | 1 | 99SHA1029-WM |
| W | Cabinet door knob | 1 | 99SHA1030-WM |
| X | Glass panel clamps | 2 | 99SGC0023-WM |
| Y | Fixed panel's bottom seal strip (Long) | 1 | 99SRU0003 |
| Y1 | Fixed panel's bottom seal strip (Short) | 1 | 99SRU0030 |
| Z1 | Left side acrylic panel | 1 | NOT INCLUDED |
| Z2 | Right side acrylic panel | 1 | |

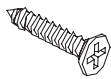
HARDWARE CONTENT

AA



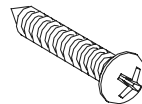
Screw
ST4x15mm
9+2 extra

BB



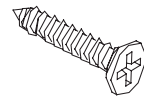
Screw
ST4x20mm
2+1 extra

CC



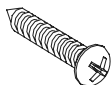
Screw
ST4x50mm
12+2 extra

DD



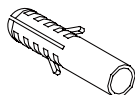
Screw
ST4x30mm
2+1 extra

EE



Screw
ST4x30mm
5+2 extra

FF



Wall Anchor
ø6x30mm
14+2 extra

GG



Fitting
x9

HH



Cap
x9



Screwdriver

TOOLS REQUIRED



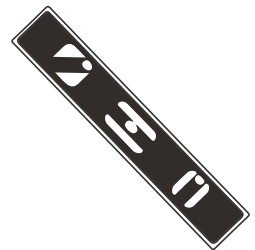
Pencil



Safety glasses



Drill with ceramic tile bits
ø3mm (1/8") & ø6mm (1/4")



Level



Measuring Tape



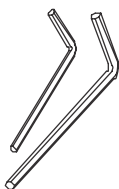
Silicone



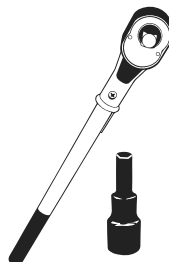
Rubber mallet



Cutter



Allen key
2.5mm & 4mm



Ratchet
5mm Bit socket



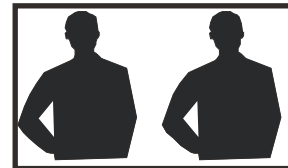
Jigsaw



SAFETY INFORMATION

Please read and understand this entire manual before attempting to assemble, operate or install the product.

- Handle the tempered glass with caution! Improperly handling the glass can cause it to break suddenly in small pieces (never in pointed fragments).
- You will need at least two people to install this unit properly.



WARNING

- Distributor is not responsible for any damage to the unit or personal property caused by improper installation. If you disregard instructional warnings, you will void your warranty and possibly deal with water damage.

CAUTION

- Carefully remove product from packaging and keep packaging until installation is complete.
- Inspect all parts for damage; if there is damage to the unit prior to installation, please contact customer service at the number provided in this guide.
- Install the shower on a floor that is level and able to accommodate the weight of the unit and an occupant.
- Please, consult local building codes and compliance standards prior to installation and ensure conformity.

PREPARATION

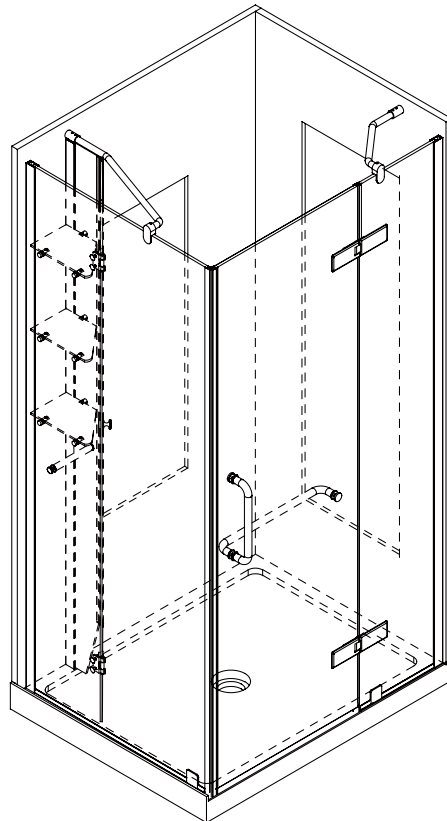
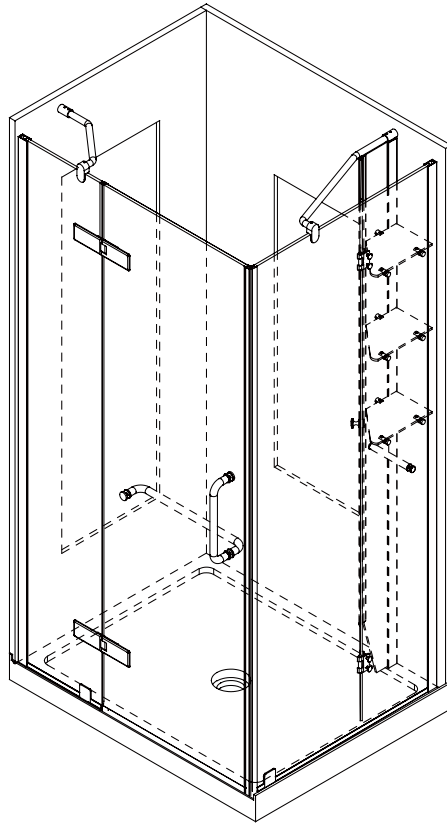
Before beginning assembly of product, make sure all parts are present. Compare parts with package contents list and hardware contents list. If any part is missing or damaged, do not attempt to assemble the product.

Estimated Assembly Time: Shower (60 min).

SHOWER REVERSIBILITY

- This instruction is drawn up for an opening from right to left (see illustration A).
- For an installation from left to right (see illustration B), use the same instructions, but switch around the panels: mirror effect.

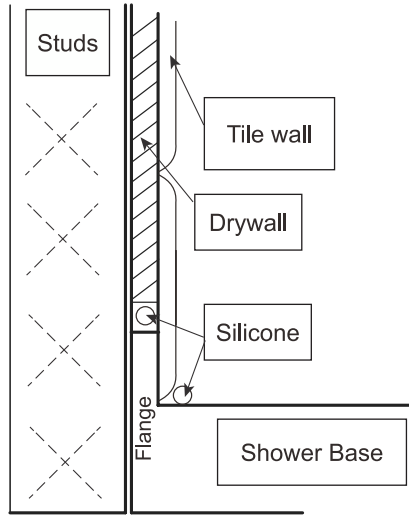
A



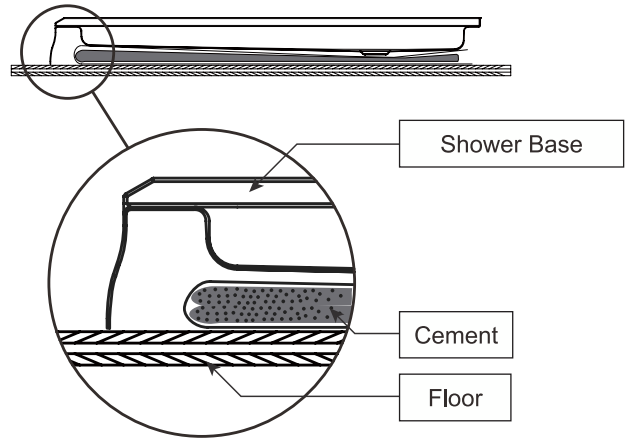
B

BASE INSTALLATION GUIDELINES FOR TILE WALL (OPTIONAL)

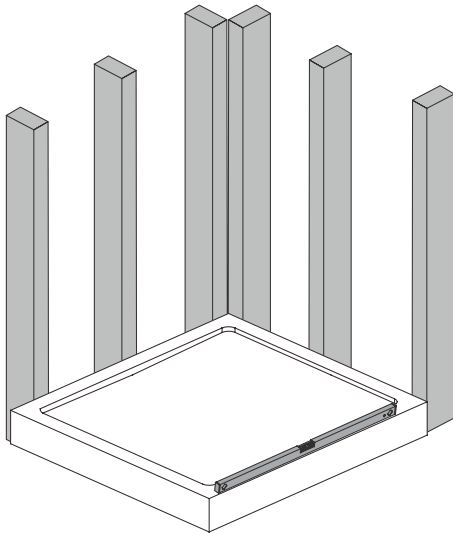
1



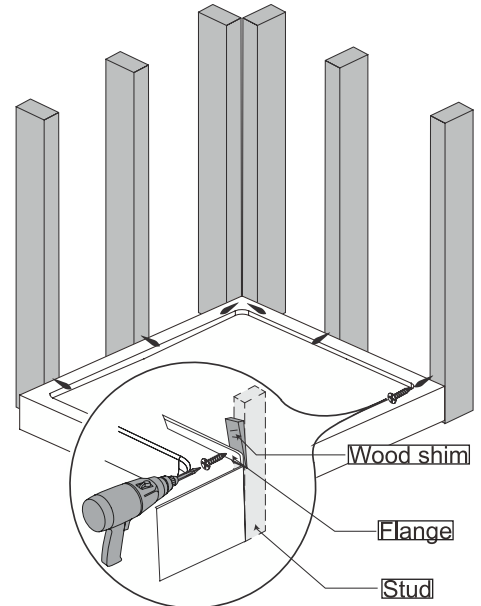
2



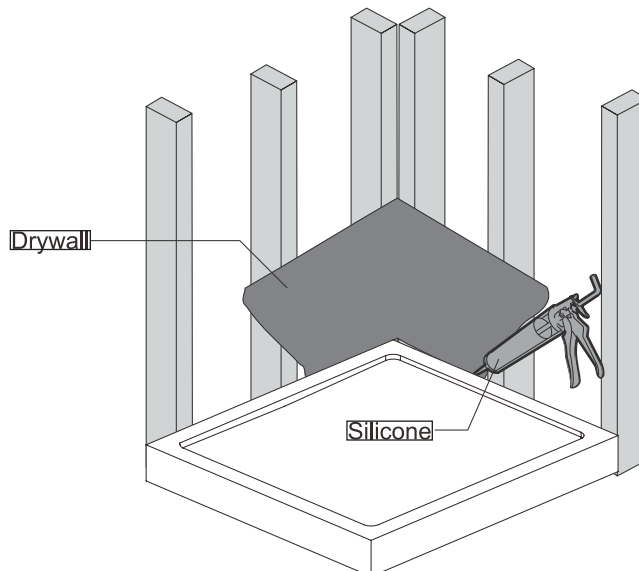
3



4



5



BASE AND ACRYLIC WALL INSTALLATION (OPTIONAL)

Notes:

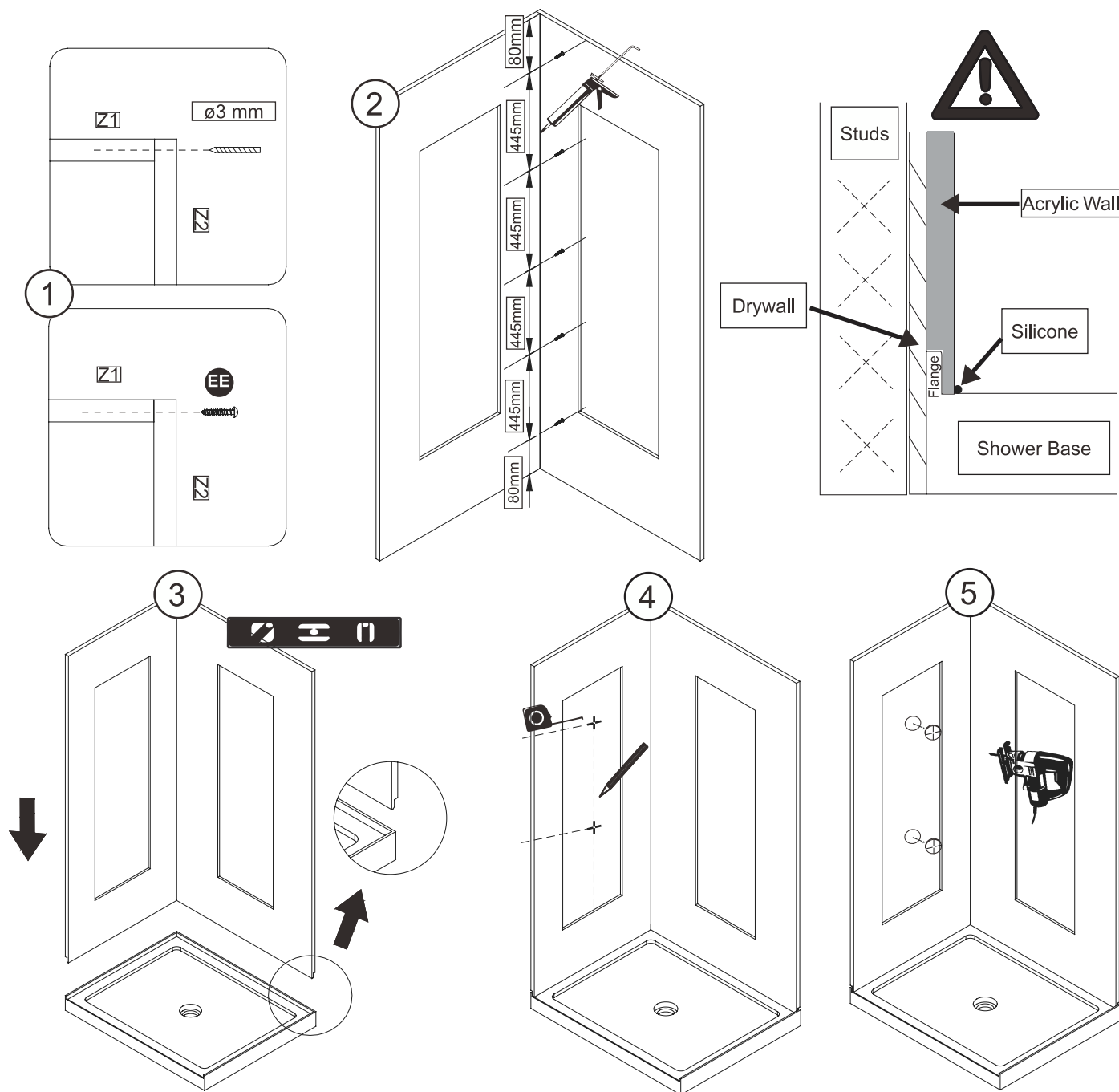
- Do not install acrylic shower panels directly against tiled walls.
- Install the acrylic shower panels against water resistant gyproc or cement walls.
- Before assembling permanently the panels, apply the silicone sealant on the internal edges.

1-2. Place the acrylic panels (Z1 & Z2) together, drill the 2 panels, secure with the screws (EE).

Notes: It is recommended that a small diameter bit be used when first drilling acrylic panels to avoid cracking them. Begin with the smaller bit and gradually move to larger drill bits until the proper sized hole is attained.

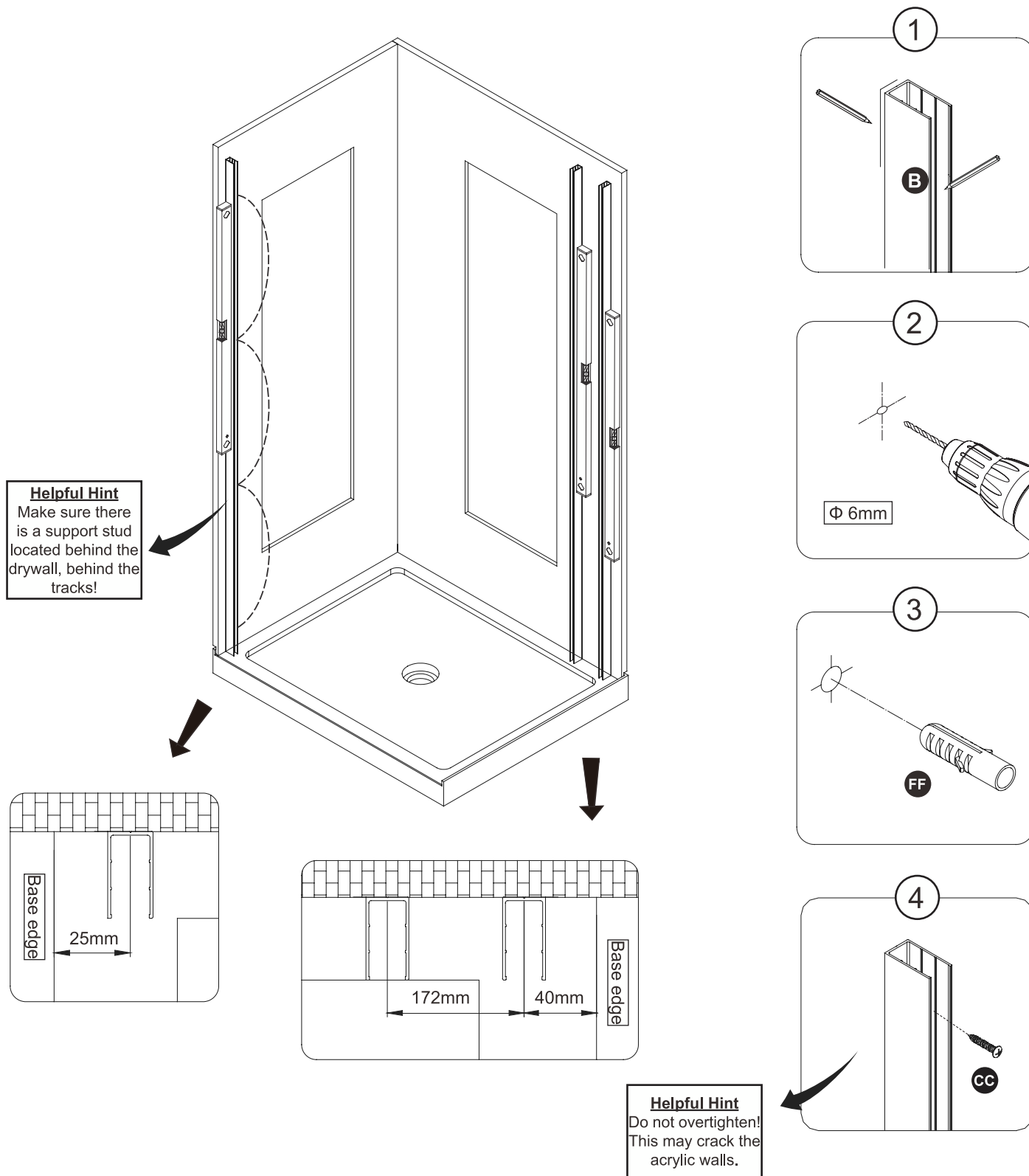
3. Place the panels onto the edges of the base and make sure they are leveled before going to the next step.

4-5. Carefully measure and trace the exact location of the plumbing access on the panels. Remove the panels from the base, double check your measurements and then drill holes in the panel that will accommodate the shower head and the shower handles.



WALL TRACKS INSTALLATION

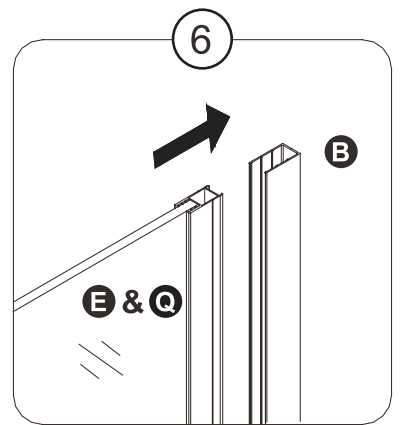
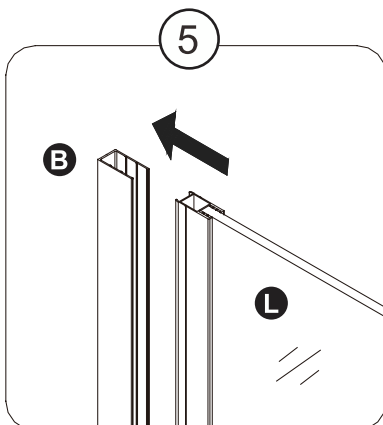
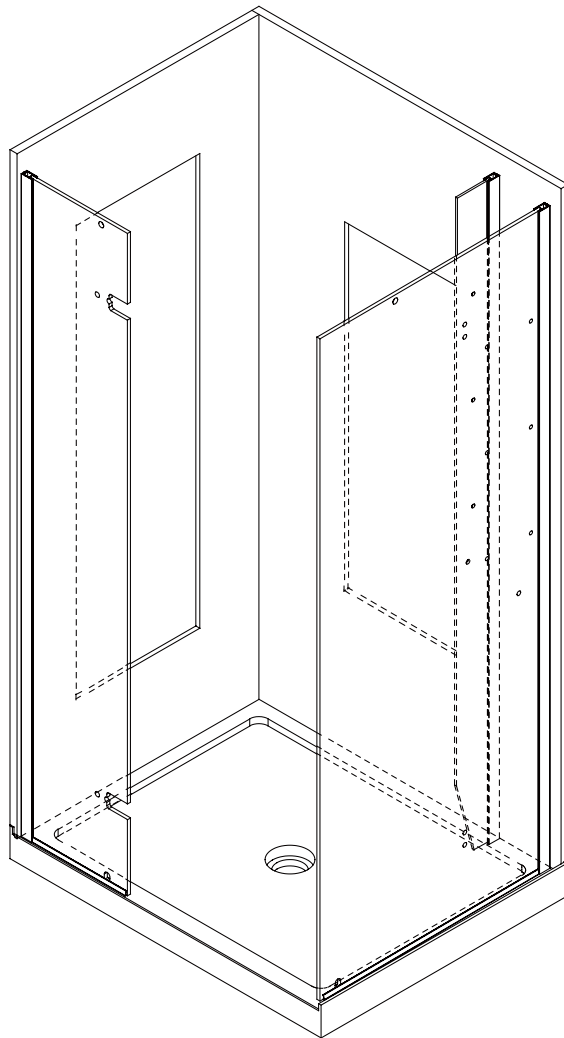
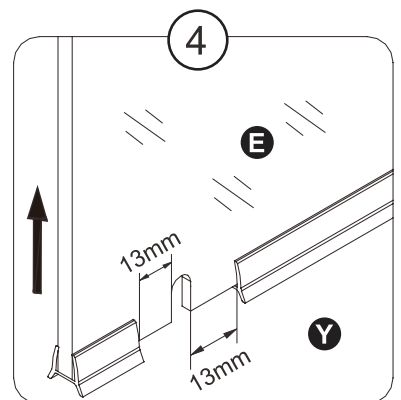
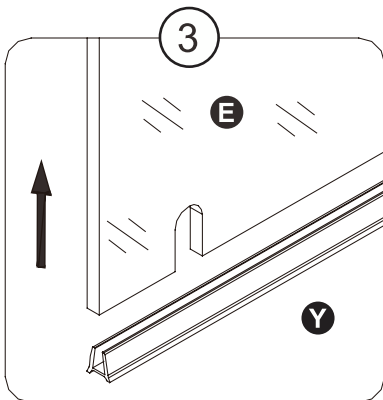
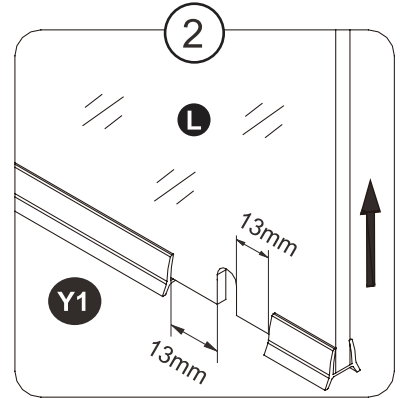
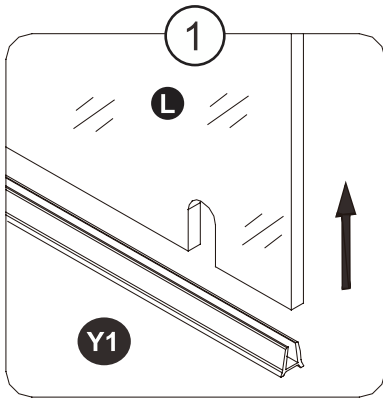
1. Level the tracks (B) and mark the track holes' positions. 4 holes for each track.
2. Remove tracks and drill pilot holes in the marked locations with a $\Phi 6\text{mm}$ drill bit.
3. Insert the wall anchors (FF) using a rubber mallet until the wall anchors are flush with the wall.
4. Replace and secure the 3 metal tracks (B) with screws (CC). Do not overtighten.



FIXED PANEL AND SIDE PANEL INSTALLATION

1-4. Insert the fixed panel's bottom seal strips (Y & Y1) at the base of the fixed glass panel (L) and side panel (E). Cut the surplus part for the clamp.

5-6. Insert the fixed panel (L), side panel (E) and the cabinet fixed panel (Q) into the metal tracks (B). Do not fully tighten it as further adjustments may be required.

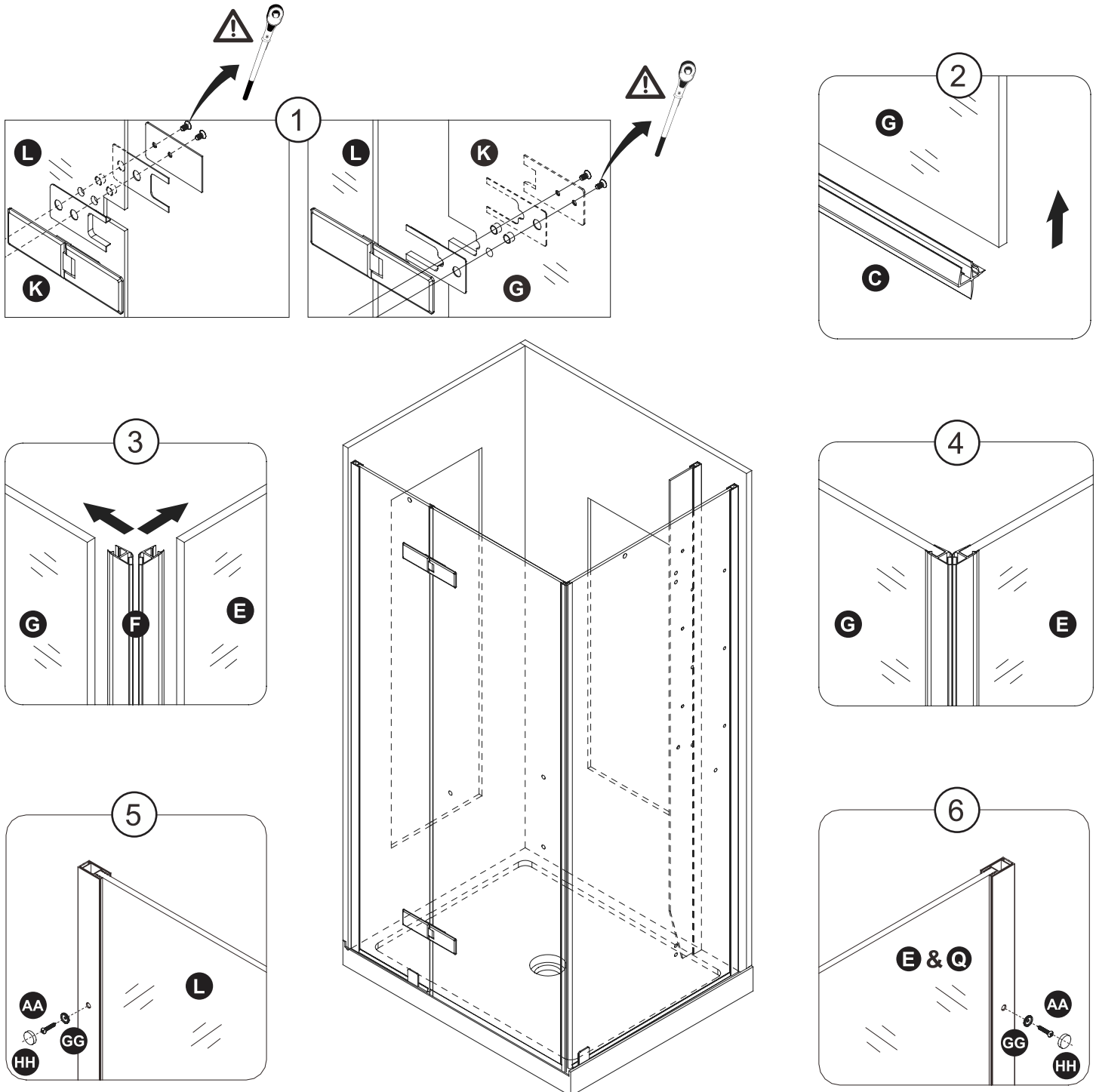


DOOR PANEL INSTALLATION

1. Install fixed glass panel (L) and door panel (G) with the 2 hinges (K). Use a ratchet to strongly tighten the bolts.
2. Insert the door panel's bottom seal strip (C) into the door panel (G).
- 3-4. Insert the 2 magnetic door seal strips (F) on the door panel (G) and the side panel (E).

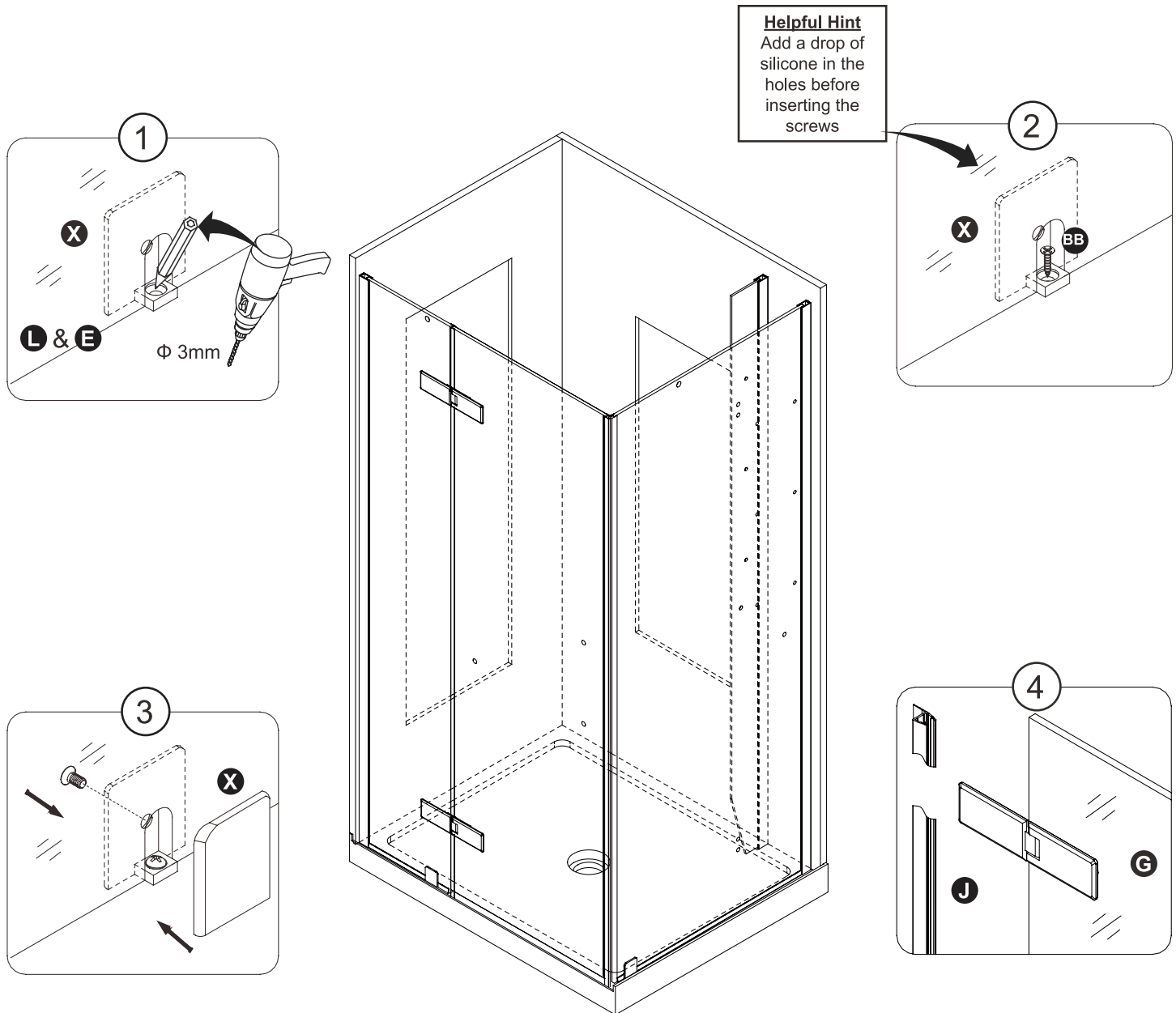
Note: The wall tracks (B) allow you to adjust the position of the fixed glass panels (L & E & Q).
Adjusting the depth and/or giving the fixed panel a slight angle allows for precise alignment with the door.

- 5-6. Level the fixed panel (L), side panel (E) and the cabinet fixed panel (Q). Then fix them with the fitting (GG), screw (AA) and cap (HH).



DOOR PANEL INSTALLATION

1. Place the glass panel clamps (X) into the fixed glass panel (L) and side panel (E), mark the hole's place and make a hole in the base using $\varnothing 3\text{mm}$ drill bit.
2. Secure the glass panel clamps (X) using screw (BB).
3. Completely install the glass panel clamps (X) using 4mm Allen key.
4. Insert door panels' vertical seal strip (J) into the door panel (G). Cut the surplus part for the hinges.

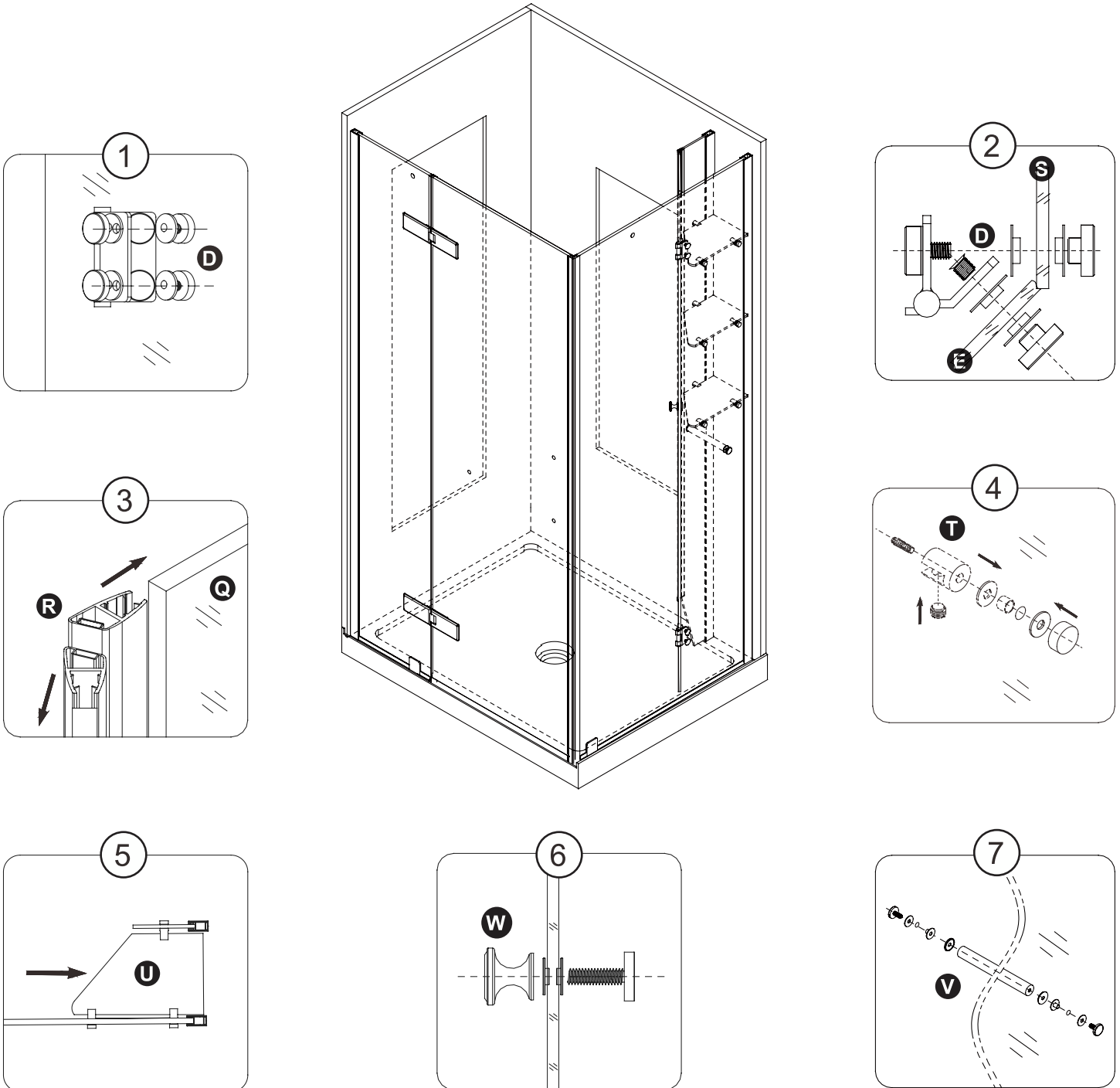


CABINET INSTALLATION

- 1-2. Install the Interior cabinet door (S) and the side panel (E) with cabinet hinges (D).
3. Insert the 2 cabinet door magnetic strips (R) to the cabinet door panel (S) and fixed panel (Q).
4. Install the shelf supports (T) onto the cabinet fixed panel (Q) and the side panel (E).

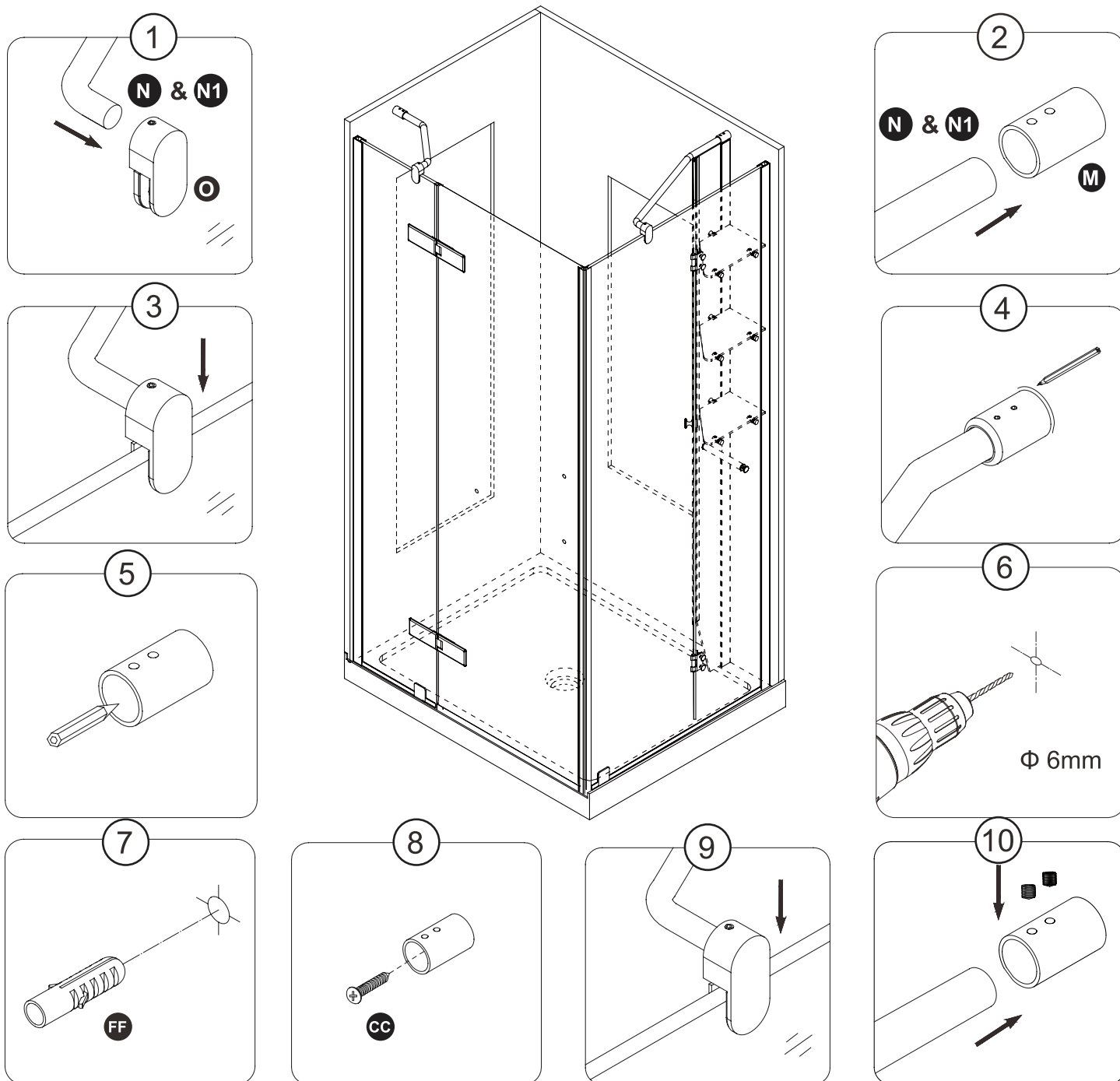
Note: The wall tracks (B) allow you to adjust the position of the cabinet fixed glass panel (Q) for the next steps.

5. Insert the glass shelves (U) into the shelf supports (T) and secure them.
6. Install the cabinet door knob (W) onto the door (S).
7. Install the Towel bar (V) onto the side panel (E) and the cabinet fixed panel (Q).



SUPPORT BAR INSTALLATION

- 1-2.** Install the 2 glass panel's brackets (O) and the support bar's anchor (M) onto the support bar (N & N1).
- 3.** Insert the 2 glass panel's brackets (O) into the fixed glass panel (L) and the side panel (E). Ensure that the plastic gaskets are in the brackets (O) as these protect the glass panels.
- 4.** Mark the outline of the support bar's anchor (M).
- 5.** Completely remove the support bar (N & N1). Place the support bar's anchor (M) back on its wall mark, mark the hole of it.
- 6.** Drill a hole on the center marks with a $\varnothing 6\text{mm}$ drill bit.
- 7-8.** Insert the wall anchors (FF) using a rubber mallet. Fix the center fitting on the support bar's anchor (M) using the screw (CC). Use screw (DD) when install without acrylic wall.
- 9-10.** Install again the support bar (N & N1) onto the fixed glass panel (L), side panel (E) and support bar anchor (M). Strongly tighten the bolts using 2.5mm Allen key.



HANDLE INSTALLATION & SEALING

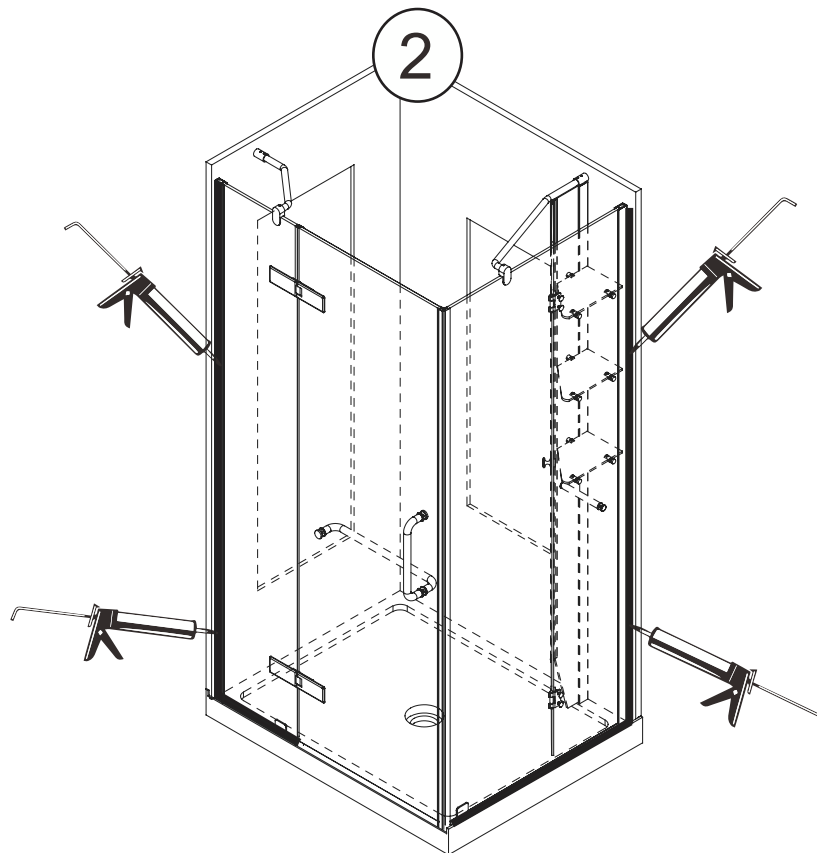
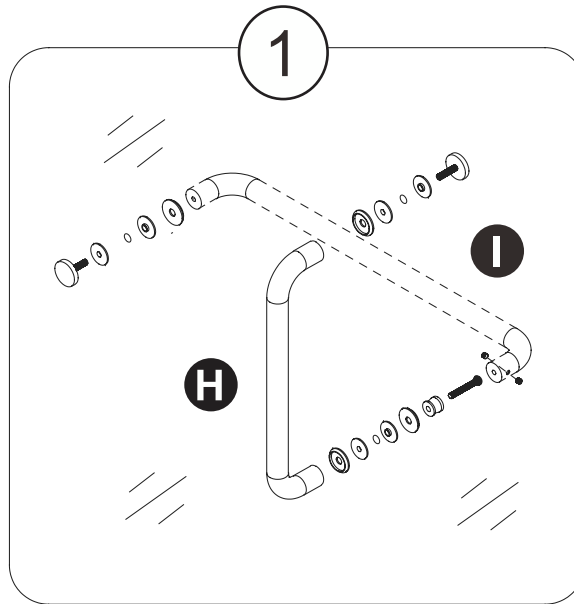
1. Install the door handle (H & I) using an Allen key.

2. Ensure that the door closes and opens smoothly, and that there is a tight connection between the side glass panels and the frame as well as the support bar.

Apply a clear silicone water sealant around the outside perimeter of any fixed shower components (horizontally between bottom of fixed glass panel, side panel and base, as well as vertically between the wall, glass frames, and any side glass panel).

Allow 24 hours for silicone to dry.

Improper application of silicone sealant may cause your shower to leak.



CARE AND MAINTENANCE

For the daily maintenance, use a wet cloth and a soft liquid cleaner.

Never use abrasive cleaners containing some acetone, chlorine or strong bleach, scrapers, metallic brushes, nor other objects or the products which can graze or tarnish surfaces.

Use a ratchet to strongly tighten any bolts used to support the fixed glass panels or doors panel (support bolts can withstand up to 250 lbf*in of torque).

Check these bolts every 4 months and re-tighten them if necessary.

LIMITED 5 YEARS WARRANTY

This warranty extends only to the original owner lend-user for personal household use only. For commercial uses, additional limitations may apply.

Distributor warrants your satisfaction with each shower. Should any shower not meet your satisfaction due to a visual defect, simply return it to your retailer with the original packaging, PRIOR TO INSTALLATION, for a replacement.

Distributor warrants shower doors to be free from defects in workmanship and materials under normal use and service for a period of five (5) years.

Distributor warrants acrylic surface against blistering or cracking and chipping resulting from defect in the acrylic surface material when used under normal conditions and service for a period of five (5) years from purchase date.

Distributor further warrants the structure of the acrylic shell against loss of water through fiberglass laminate of the acrylic body as a result of defect in materials and workmanship for a period of five (5) years from purchase date.

Distributor warrants, shower hardware (handles, hinges, rubber support clips, metal support bars and wall tracks) to be free from defects in workmanship and materials under normal use and service for a period of one (1) year.

Distributor will, at its election, repair, replace, or make appropriate adjustment where distributor optional inspection discloses any such defects occurring in normal usage within the warrantee periods.

Please note distributor is not responsible for installation or removal costs.

Modification of any shower enclosure components may void the warranty. This warranty does not cover any claim arising from abuse, misuse, negligence, accident, improper installation or operations on the part of the purchaser. This warranty is void if the distributor product is subject to alterations, or if repairs where done to the shower unit.

This warranty does not extend to any plumbing or components installed by dealers, installers or by any party other than distributor.

Implied warranties, including that of merchantability or fitness for a particular purpose, are expressly limited in duration to the duration of this warranty.

Distributor disclaims any liability for special, incidental or consequential damages.