

This guide provides an overview of X-WAY's 360 degree-installation method, **Quattro Clic**. Prior to installation, please review the instruction manual located inside the product packaging.

Quattro Clic Profiling System

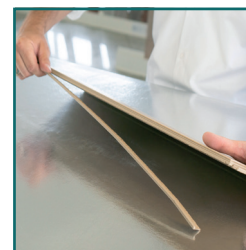
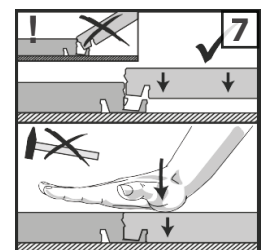
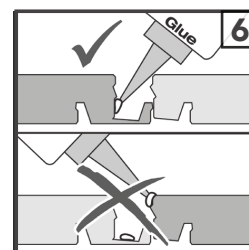
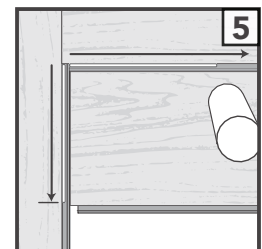
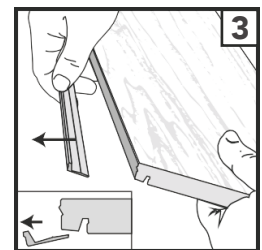
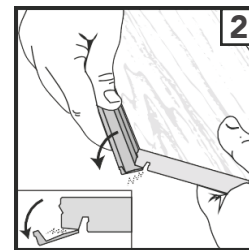
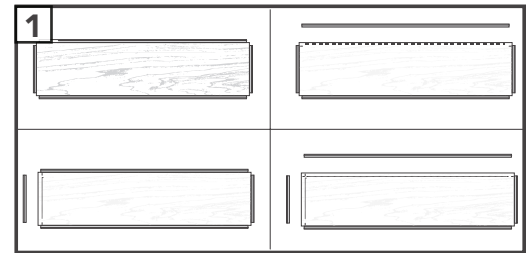
In its initial condition, each plank will have a groove lip surrounding all sides [1]. X-WAY flooring offers the possibility of converting any groove side into a tongue side through physical effort alone. To do this, either break off the groove lip on the corresponding side at the defined breaking point [2-3], or leave it in its initial condition. A neatly broken groove lip must be ensured after each break-off. Any residues should be carefully removed using a chisel/pry bar.

Depending on the laying pattern, the groove lips must be broken off either on one or on both sides of the planks [1]. Each time you prepare a tongue side, make sure it can be joined with the groove side of the preceding plank by holding planks next to each other before gluing [4].

Gluing Adjoining Planks

Irrespective of the laying pattern, each plank must be glued together with other adjacent planks [5]. The glue bead is always applied to the already installed planks [5]. The glue bead is always applied to the plank that is already installed, rather than to the one yet to be installed [6]. The floating installation is not affected thereby. Each time connecting planks [7], apply force in order to join the planks together. Do not use a hammer for joining and do not angle the plank being installed. Avoid putting any further pressure on the laid surface until the glue has set.

It is not recommended to walk on the glued laminate flooring for 90 minutes. Use the moist wipe to immediately remove any glue leaks from the joint during the plank joining.



Installation Patterns

X-WAY allows for endless configuration options due to the side ratio of 2 (length) to 1 (width). These laminate floorings can be easily laid in all directions. The key requirement for this is the presence of the groove lip, i.e. that it is not broken off the external edge of the installed surface. It is, however, advisable to maintain the main laying direction.

