

Carlton® Non-Metallic Switch, Outlet and Ceiling Boxes



**Carlton®
PVC**
Blue PVC Boxes

**Carlton®
SUPER BLUE®**
PVC Boxes

**Carlton®
PC**
Black Polycarbonate Boxes
Vapor Barrier PC Boxes
Ceiling Boxes

**Carlton®
PH**
Brown Phenolic Boxes

**Carlton®
LV**
Orange Low Voltage
Structured Cable
Management System
(SCMS)

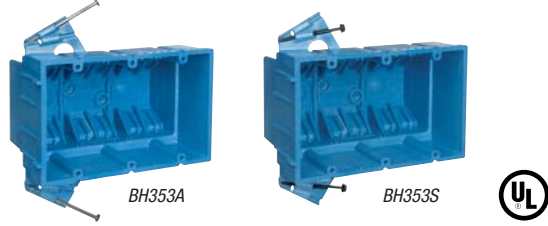
Carlton SuperBlue[®]

SuperBlue[™] Boxes



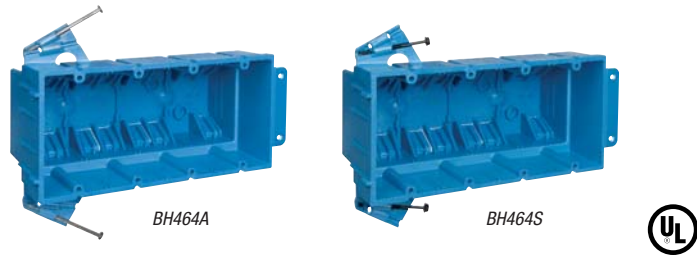
New Work

Three-Gang 53 Cu. In.



| CAT. NO. | SIZE CU. IN. | MOUNTING MEANS | DESCRIPTION | DIMENSIONS (IN.) | STD. CTN. QTY. |
|----------|--------------|----------------|-----------------------------|---|----------------|
| BH353A | 53.0 | Nails | Three-gang; integral clamps | 5 ⁷ / ₈ L x 3 ³ / ₄ W x 3 ¹ / ₂ D | 24 |
| BH353S | 53.0 | Screws | Three-gang; integral clamps | 5 ⁷ / ₈ L x 3 ³ / ₄ W x 3 ¹ / ₂ D | 24 |

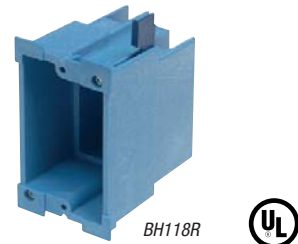
Four-Gang 64 Cu. In.



| CAT. NO. | SIZE CU. IN. | MOUNTING MEANS | DESCRIPTION | DIMENSIONS (IN.) | STD. CTN. QTY. |
|----------|--------------|---------------------------|----------------------------|---|----------------|
| BH464A | 64.0 | Nails and molded bracket | Four-gang; integral clamps | 7 ³ / ₄ L x 3 ⁷ / ₈ W x 3 ¹ / ₂ D | 24 |
| BH464S | 64.0 | Screws and molded bracket | Four-gang; integral clamps | 7 ³ / ₄ L x 3 ⁷ / ₈ W x 3 ¹ / ₂ D | 24 |

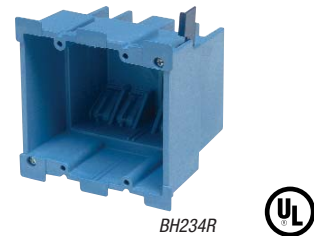
Old Work

One-Gang 18.0 Cu. In.



| CAT. NO. | SIZE CU. IN. | MOUNTING MEANS | DESCRIPTION | DIMENSIONS (IN.) | STD. CTN. QTY. |
|----------|--------------|------------------------------|---------------------------|---|----------------|
| BH118R | 18.0 | Mounting ears & swing clamps | One-gang; integral clamps | 3 ⁷ / ₈ L x 2 ³ / ₈ W x 3 ⁵ / ₈ D | 36 |

Two-Gang 34.0 Cu. In.



| CAT. NO. | SIZE CU. IN. | MOUNTING MEANS | DESCRIPTION | DIMENSIONS (IN.) | STD. CTN. QTY. |
|----------|--------------|------------------------------|---------------------------|---|----------------|
| BH234R | 34.0 | Mounting ears & swing clamps | Two-gang; integral clamps | 3 ⁷ / ₈ L x 2 ³ / ₈ W x 3 ⁵ / ₈ D | 18 |

Carlton SuperBlue[®] PVC Boxes





Carlon SuperBlue[®] SuperBlue[™] Boxes

Carlon SuperBlue[®] PVC Boxes

Ceiling Boxes



BH525A-UPC



BH525P



3/0-4/0 Combination 25.0 Cu. In.

| CAT. NO. | SIZE CU. IN. | MOUNTING MEANS | DESCRIPTION | DIMENSIONS (IN.) | STD. CTN. QTY. |
|--------------|--------------|----------------|--|------------------|----------------|
| • BH525A-UPC | 25.0 | Nails | Integral clamps | 4 Dia. x 3.00 D | 48 |
| • BH525P | 25.0 | Nails | Integral clamps; ground lug and screw attached | 4 Dia. x 3.00 D | 24 |

• Listed for fixture support up to 50 lbs.



BH525L



Fan Box 25.0 Cu. In.

| CAT. NO. | SIZE CU. IN. | MOUNTING MEANS | DESCRIPTION | DIMENSIONS (IN.) | STD. CTN. QTY. |
|-----------|--------------|---------------------|--|------------------|----------------|
| • BH525L | 25.0 | L bracket and nails | Integral clamps | 4 Dia. x 3.00 D | 24 |
| • BH525LP | 25.0 | L bracket and nails | Integral clamps; ground lug and screw attached | 4 Dia. x 3.00 D | 24 |

• Listed for fan support up to 35 lbs. and fixture support up to 50 lbs.



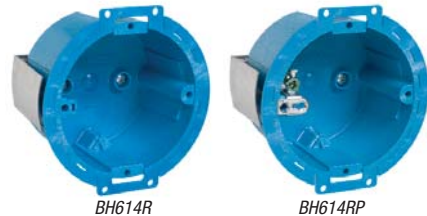
BH525H



Ceiling Box with Hanger Bar 25.0 Cu. In.

| CAT. NO. | SIZE CU. IN. | MOUNTING MEANS | DESCRIPTION | DIMENSIONS (IN.) | STD. CTN. QTY. |
|-----------|--------------|-------------------------------|--|------------------|----------------|
| • BH525H | 25.0 | Hanger bar 11 1/2" to 18 1/2" | Integral clamps | 4 Dia. x 3.00 D | 20 |
| • BH525HP | 25.0 | Hanger bar 11 1/2" to 18 1/2" | Integral clamps; ground lug and screw attached | 4 Dia. x 3.00 D | 20 |

• Listed for fixture support up to 50 lbs.



BH614R

BH614RP



3 1/2" 14.5 Cu. In.

| CAT. NO. | SIZE CU. IN. | MOUNTING MEANS | DESCRIPTION | DIMENSIONS (IN.) | STD. CTN. QTY. |
|-------------|--------------|------------------------------|-------------------------------------|----------------------|----------------|
| • † BH614R | 14.5 | Base, ears & snap-in bracket | Round old/new work box | 3 1/2 Dia. x 2 3/8 D | 24 |
| • † BH614RP | 14.5 | Base, ears & snap-in bracket | Round old/new work box w/ground lug | 3 1/2 Dia. x 2 3/8 D | 24 |

• Listed for wall fixture support up to 10 lbs.

† Tighten screws to 10 in.-lbs.



Carlon® PC New Work Boxes



Carlon® Black Polycarbonate Boxes

Carlon® non-metallic boxes feature a rugged polycarbonate construction to withstand extreme temperatures. The boxes will not distort or soften in heat, and they won't become brittle in the cold.

- All Polycarbonate boxes are listed to UL514C
- All Polycarbonate boxes are listed for masonry walls

- Except as indicated, all Polycarbonate boxes are UL Classified for 2 hr. fire wall and/or fire ceiling
- All Polycarbonate boxes meet NEMA OS-2
- All Polycarbonate boxes are permissible for use with 90 degree C conductors
- UL File E11461 and R9140

Grip-On GO Box® Single Gang Outlet Box

- Instead of nails or other fasteners, unique clamps are used to hold the box securely in place. Simply push onto the stud and go
- The GO Box outlet box is removable for easy repositioning
- “Fast-Set” mounting holes enable quick installation of devices
- Perfectly aligned every time
- Perfect for drywall depth
- A locator hole in the mounting bracket helps position the box on marked studs for accurate installation

- The GO Box design is UL Listed
- 23.0 cu. in. capacity accommodates large devices and offers easy installation of wiring

It's a whole new ball game for high-volume residential products. That's because the Carlon® GO Box® product line is one of the most revolutionary labor-saving products ever designed. The GO stands for “Grip-On,” and that's exactly how it works. Just push the box onto a stud and the specially designed clamps hold it in place. No tools or fasteners are required, reducing installation time, which means you can move on to the next job. When it comes to lower installed costs, this changes everything!



One-Gang 23.0 Cu.In.

| CAT. NO. | SIZE CU. IN. | MOUNTING MEANS | DESCRIPTION | DIMENSIONS (IN.) | STD. CTN. QTY. |
|----------|--------------|-----------------|-------------|--------------------|----------------|
| GO-23 | 23.0 | Grip-On bracket | — | 3¾ L x 2¾ W x 2½ D | 30 |
| GO-23-FS | 23.0 | Grip-On bracket | Fast-Set | 3¾ L x 2¼ W x 2½ D | 30 |



118-N



120-N



120-N-FS



122-N



122-N-FS

One-Gang Nail-On 18.0 - 22.5 Cu. In.

| CAT. NO. | SIZE CU. IN. | MOUNTING MEANS | DESCRIPTION | DIMENSIONS (IN.) | STD. CTN. QTY. |
|----------|--------------|-------------------|-------------|--------------------|----------------|
| 118-N | 18.0 | Angled side nails | — | 3¾ L x 2¼ W x 2¾ D | 100 |
| 120-N | 20.3 | Angled side nails | — | 3¾ L x 2¼ W x 3¾ D | 100 |
| 120-N-FS | 20.3 | Angled side nails | Fast Set | 3¾ L x 2¼ W x 3¾ D | 100 |
| 122-N | 22.5 | Angled side nails | — | 3¾ L x 2¼ W x 3¾ D | 100 |
| 122-N-FS | 22.5 | Angled side nails | Fast Set | 3¾ L x 2¼ W x 3¾ D | 100 |



Carlon® Black Polycarbonate Boxes



United States
Tel: 901.252.8000
Fax: 901.252.1354

Technical Services
Tel: 888.862.3289

Thomas & Betts

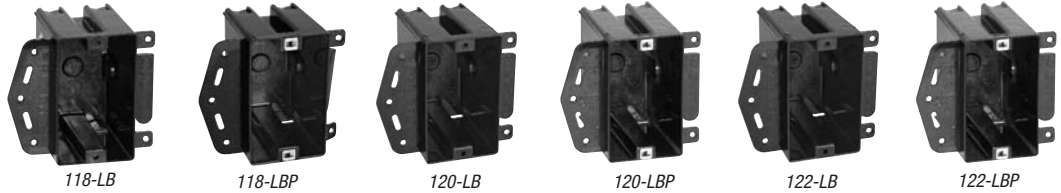
www.tnb.com



Carlon[®] PC New Work Boxes

Carlon[®] Black Polycarbonate Boxes

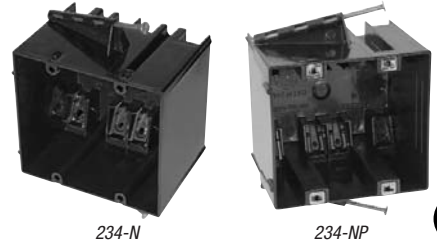
New Work Boxes



One-Gang Brackets 18.0 - 22.5 Cu. In.



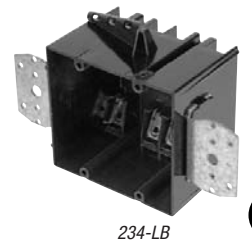
| CAT. NO. | SIZE CU. IN. | MOUNTING MEANS | DESCRIPTION | DIMENSIONS (IN.) | STD. CTN. QTY. |
|----------|-----------------|--|--------------------------------|--|-------------------|
| 118-LB | 18.0 | Molded side bracket for wood/steel studs | — | 3 ³ / ₄ L x 2 ¹ / ₄ W x 2 ⁷ / ₈ D | 100 |
| 118-LBP | 18.0 | Molded side bracket for wood/steel studs | POSI-SET [®] Fast Set | 3 ³ / ₄ L x 2 ¹ / ₄ W x 2 ⁷ / ₈ D | 100 |
| 120-LB | 20.3 | Molded side bracket for wood/steel studs | — | 3 ³ / ₄ L x 2 ¹ / ₄ W x 3 ⁹ / ₁₆ D | 100 |
| 120-LBP | 20.3 | Molded side bracket for wood/steel studs | POSI-SET [®] Fast Set | 3 ³ / ₄ L x 2 ¹ / ₄ W x 3 ⁹ / ₁₆ D | 100 |
| 122-LB | 22.5 | Molded side bracket for wood/steel studs | — | 3 ³ / ₄ L x 2 ¹ / ₄ W x 3 ⁵ / ₈ D | 100 |
| 122-LBP | 22.5 | Molded side bracket for wood/steel studs | POSI-SET [®] Fast Set | 3 ³ / ₄ L x 2 ¹ / ₄ W x 3 ⁵ / ₈ D | 100 |



Two Gang Nail-On 34.0 Cu. In.



| CAT. NO. | SIZE CU. IN. | MOUNTING MEANS | DESCRIPTION | DIMENSIONS (IN.) | STD. CTN. QTY. |
|----------|-----------------|-------------------|---|--|-------------------|
| 234-N | 34.0 | Angled side nails | POSI-WEDGE [®] cable clamps | 3 ³ / ₄ L x 4 W x 3 ³ / ₃₂ D | 50 |
| 234-NP | 34.0 | Angled side nails | POSI-WEDGE [®] POSI-SET [®] | 3 ³ / ₄ L x 4 W x 3 ³ / ₃₂ D | 50 |



Two Gang Bracket 34.0 Cu. In.



| CAT. NO. | SIZE CU. IN. | MOUNTING MEANS | DESCRIPTION | DIMENSIONS (IN.) | STD. CTN. QTY. |
|----------|-----------------|---|--------------------------------------|--|-------------------|
| 234-LB | 34.0 | Steel side bracket for wood/steel studs | POSI-WEDGE [®] cable clamps | 3 ³ / ₄ L x 4 W x 3 ³ / ₃₂ D | 50 |

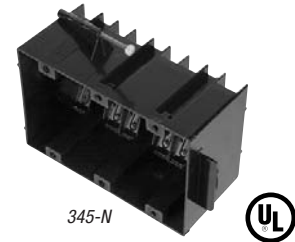


Carlson[®] PC New Work Boxes



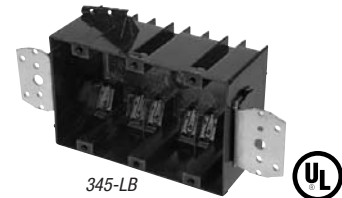
New Work Boxes

Three-Gang Nail-On 45.0 Cu.In



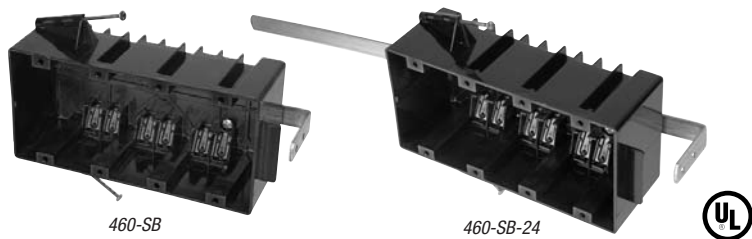
| CAT. NO. | SIZE CU. IN. | MOUNTING MEANS | DESCRIPTION | DIMENSIONS (IN.) | STD. CTN. QTY. |
|----------|--------------|-------------------|--------------------------------------|---|----------------|
| 345-N | 45.0 | Angled side nails | POSI-WEDGE [®] cable clamps | 3¾ L x 5 ¹³ / ₁₆ W x 2¾ D | 20 |

Three Gang Bracket 45 Cu. In.



| CAT. NO. | SIZE CU. IN. | MOUNTING MEANS | DESCRIPTION | DIMENSIONS (IN.) | STD. CTN. QTY. |
|----------|--------------|---|--------------------------------------|---|----------------|
| 345-LB | 45.0 | Steel side bracket for wood/steel studs | POSI-WEDGE [®] cable clamps | 3¾ L x 5 ¹³ / ₁₆ W x 2¾ D | 25 |

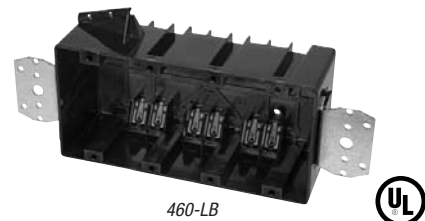
Four Gang Nail-On 60 Cu. In.



| CAT. NO. | SIZE CU. IN. | MOUNTING MEANS | DESCRIPTION | DIMENSIONS (IN.) | STD. CTN. QTY. |
|---------------|--------------|----------------------------------|--------------------------------------|--|----------------|
| * 460-SB | 60.0 | Angled side nails & back bracket | POSI-WEDGE [®] cable clamps | 3¾ L x 7 ⁹ / ₁₆ W x 2¾ D | 10 |
| * • 460-SB-24 | 60.0 | Angled side nails & back bracket | POSI-WEDGE [®] cable clamps | 3¾ L x 7 ⁹ / ₁₆ W x 2¾ D | 10 |

- * 24" adjustable bracket
- * Not UL Classified for fire wall and/or fire ceiling.

Four Gang Bracket 60 Cu. In.



| CAT. NO. | SIZE CU. IN. | MOUNTING MEANS | DESCRIPTION | DIMENSIONS (IN.) | STD. CTN. QTY. |
|----------|--------------|--|--------------------------------------|--|----------------|
| * 460-LB | 60.0 | Steel side brackets for wood/steel studs | POSI-WEDGE [®] cable clamps | 3¾ L x 7 ⁹ / ₁₆ W x 2¾ D | 8 |

- * Not UL Classified for fire wall and/or fire ceiling.

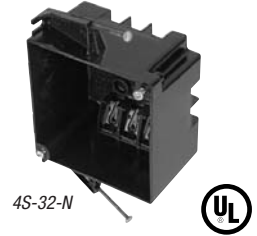
Carlson[®] Black Polycarbonate Boxes



Carlon[®] PC New Work Boxes

Carlon[®] Black Polycarbonate Boxes

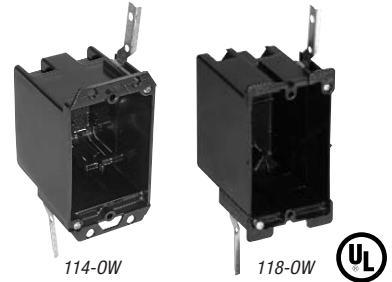
New Work Box



4" Square Boxes 32.0 Cu. In.

| CAT. NO. | SIZE CU. IN. | MOUNTING MEANS | DESCRIPTION | DIMENSIONS (IN.) | STD. CTN. QTY. |
|----------|--------------|-------------------|--------------------------------------|--|----------------|
| 4S-32-N | 32.0 | Angled side nails | POSI-WEDGE [®] cable clamps | 4 L x 4 W x 2 ⁹ / ₁₆ D | 50 |

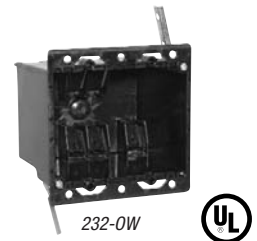
Old Work Boxes



One-Gang 14.0 – 18.0 Cu. In.

| CAT. NO. | SIZE CU. IN. | MOUNTING MEANS | DESCRIPTION | DIMENSIONS (IN.) | STD. CTN. QTY. |
|----------|--------------|--------------------|-------------|--|----------------|
| 114-OW | 14.0 | Swing-ear brackets | — | 3 ¹ / ₂ L x 2 ⁹ / ₃₂ W x 2 ⁷ / ₈ D | 50 |
| 118-OW | 18.0 | Swing-ear brackets | — | 3 ¹³ / ₁₆ L x 2 ¹ / ₄ W x 3 ¹ / ₃₂ D | 100 |

Two-Gang 32.0 Cu. In.



| CAT. NO. | SIZE CU. IN. | MOUNTING MEANS | DESCRIPTION | DIMENSIONS (IN.) | STD. CTN. QTY. |
|----------|--------------|--------------------|--------------------------------------|---|----------------|
| 232-OW | 32.0 | Swing-ear brackets | POSI-WEDGE [®] cable clamps | 3 ⁵ / ₈ L x 4 ¹ / ₁₆ W x 3 ³ / ₁₆ D | 50 |





Carlson[®] PC

New Work Boxes



Energy-Efficient Vapor Barrier Boxes

Vapor-barrier boxes are designed to meet the energy-efficiency requirements of modern homes. They feature a drywall flange covered with a foam gasket and additional gaskets over the cable entry points. These gaskets provide a vapor-tight seal, preventing the free flow of air through the box. This helps control heating costs in the winter and cooling costs in the summer.

- High strength polycarbonate construction — will not shatter when cold or distort in heat
- V-clamps provide self-clamping cable entry (multi-gang and fan/fixture box)

- 1/2" offset flange to ensure a flush fit in 1/2" drywall
- Angled side nails for rapid installation
- Pre-drilled flanges for additional mounting options



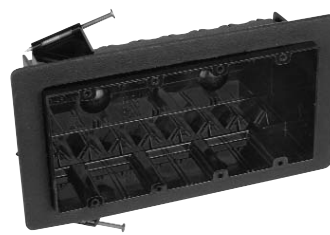
FN-23



FN-236-V



FN-354-V



FN-460-V

One-, Two-, Three- and Four-Gang



| CAT. NO. | SIZE CU. IN. | MOUNTING MEANS | DESCRIPTION | DIMENSIONS (IN.) | STD. CTN. QTY. |
|------------|--------------|-------------------|---------------|-----------------------------|----------------|
| FN-23 | 22.5 | Angled side nails | Vapor barrier | 3 5/8 L x 2 1/4 W x 3 5/8 D | 50 |
| FN-236-V | 36.0 | Angled side nails | Vapor barrier | 3 1/2 x 4 x 3 1/4 D | 50 |
| FN-354-V | 54.0 | Angled side nails | Vapor barrier | 3 1/2 x 5 3/4 x 3 1/4 D | 20 |
| * FN-460-V | 60.0 | Angled side nails | Vapor barrier | 3 1/2 x 7 1/2 x 2 3/4 D | 10 |

* Not UL Classified for fire wall and/or fire ceiling.



FN-426-C-V



Ceiling Fixture Box 26.0 Cu.In.

| CAT. NO. | SIZE CU. IN. | MOUNTING MEANS | DESCRIPTION | DIMENSIONS (IN.) | STD. CTN. QTY. |
|------------|--------------|-------------------|---------------|---------------------|----------------|
| FN-426-C-V | 26.0 | Angled side nails | Vapor barrier | 4 L x 4 W x 2 3/4 D | 50 |



FN-CFB



Ceiling Fan/Fixture 26.0 Cu.In.

| CAT. NO. | SIZE CU. IN. | MOUNTING MEANS | DESCRIPTION | DIMENSIONS (IN.) | STD. CTN. QTY. |
|----------|--------------|----------------------------------|---------------|---------------------|----------------|
| FN-CFB | 26.0 | Angled side nails and #3 bracket | Vapor barrier | 4 L x 4 W x 2 3/4 D | 50 |

Voltage Partition

| CAT. NO. | DESCRIPTION | STD. CTN. QTY. |
|----------|---|----------------|
| FNP | Voltage partition for NG & FN series multi-gang boxes | 50 |



FNP



Carlson[®] Black Polycarbonate Boxes

United States
Tel: 901.252.8000
Fax: 901.252.1354

Technical Services
Tel: 888.862.3289

Thomas & Betts

www.tnb.com





Carlton® PC New Work Boxes

Energy-Efficient Vapor Barrier Box



CFB-16-F

Saddle Type Fan/Fixture 16.0 Cu. In.

| CAT. NO. | SIZE CU. IN. | MOUNTING MEANS | DESCRIPTION | DIMENSIONS (IN.) | STD. CTN. QTY. |
|----------|-----------------|---------------------|---------------------|--|-------------------|
| CFB-16-F | 16.0 | Supplied lag screws | Ceiling fan/fixture | 4 L x 4 W x 3 ⁵ / ₁₆ D | 50 |

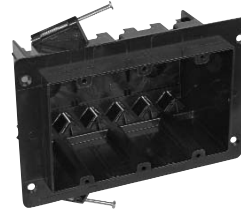
Universal Flanged Nail-On Boxes



NG-CFB



NG-236-V



NG-354-V



NG-460-V

Two-, Three- and Four-Gang

| CAT. NO. | SIZE CU. IN. | MOUNTING MEANS | DESCRIPTION | DIMENSIONS (IN.) | STD. CTN. QTY. |
|--------------|-----------------|----------------------------|---------------------|---|-------------------|
| • NG-CFB | 26.0 | Angle nails and #3 bracket | Ceiling fan/fixture | 4 Dia x 2 ³ / ₄ D | 50 |
| • NG-236-V | 36.0 | Angled side nails | 2-gang wall | 3 ¹ / ₂ L x 4 W x 3 ¹ / ₄ D | 50 |
| • NG-354-V | 54.0 | Angled side nails | 3-gang wall | 3 ¹ / ₂ L x 5 ³ / ₄ W x 3 ¹ / ₄ D | 20 |
| * • NG-460-V | 60.0 | Angled side nails | 4-gang wall | 3 ¹ / ₂ L x 7 ¹ / ₂ W x 2 ³ / ₄ D | 10 |

• NG Boxes have 1/2" offset wallboard flange and V-type cable entry.

* Not UL Classified for fire wall and/or fire ceiling.

Voltage Partition



FNP

| CAT. NO. | DESCRIPTION | STD. CTN. QTY. |
|----------|---|-------------------|
| FNP | Voltage partition for NG & FN series multi-gang boxes | 50 |

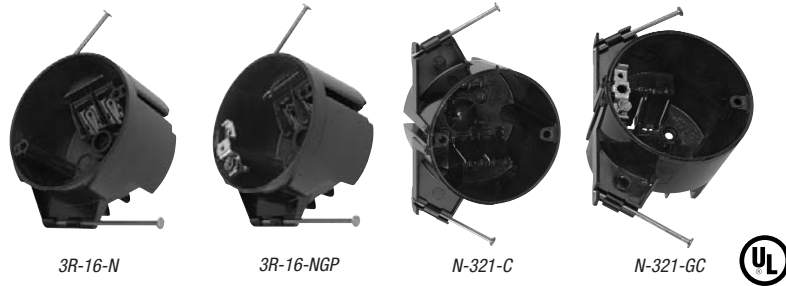




Ceiling Boxes

All ceiling boxes are produced from a high heat-resistant material developed specifically for fixture support applications.

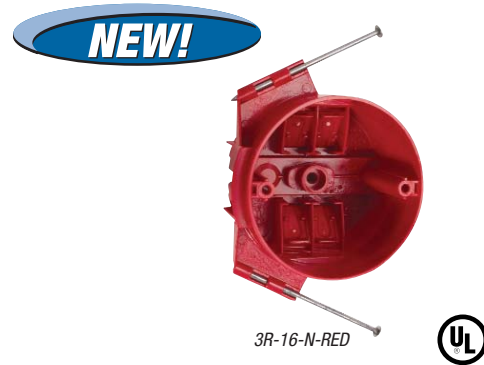
- Meets NEMA OS-2
- UL Listed to UL 514C



3 1/2" Nail-On 16.0 - 20.5 Cu. In.

| CAT. NO. | SIZE CU. IN. | MOUNTING MEANS | DESCRIPTION | DIMENSIONS (IN.) | STD. CTN. QTY. |
|-------------|--------------|-------------------|---|----------------------|----------------|
| • 3R-16-N | 16.0 | Angled nails | POSI-WEDGE® cable clamps ground strap installed | 3 1/2 Dia. x 2 1/4 D | 50 |
| • 3R-16-NGP | 16.0 | Angled nails | POSI-WEDGE® cable clamps | 3 1/2 Dia. x 2 1/4 D | 50 |
| • N-321-C | 20.5 | Angled side nails | Molded fast clamps | 3 1/2 Dia. x 3 1/8 D | 50 |
| • N-321-GC | 20.5 | Angled side nails | Molded fast clamps ground strap installed | 3 1/2 Dia. x 3 1/8 D | 50 |

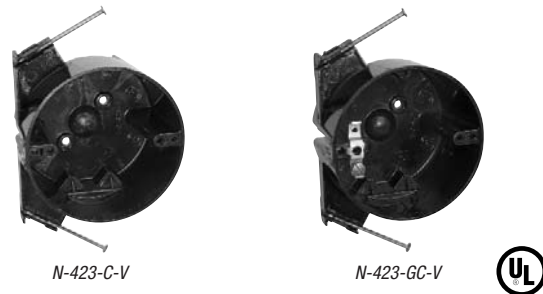
• Listed for fixture support up to 50 lbs.



3 1/2" Fire Alarm Nail-On 16.0 Cu. In.

| CAT. NO. | SIZE CU. IN. | MOUNTING MEANS | DESCRIPTION | DIMENSIONS (IN.) | STD. CTN. QTY. |
|---------------|--------------|----------------|--------------------------|----------------------|----------------|
| • 3R-16-N-RED | 16.0 | Angled nails | POSI-WEDGE® cable clamps | 3 1/2 Dia. x 2 1/4 D | 50 |

• Red ceiling box for fire alarm applications.



4" 22.5 Cu. In.

| CAT. NO. | SIZE CU. IN. | MOUNTING MEANS | DESCRIPTION | DIMENSIONS (IN.) | STD. CTN. QTY. |
|--------------|--------------|-------------------|--|------------------|----------------|
| • N-423-C-V | 22.5 | Angled side nails | Molded V-clamps ground strap installed | 4 Dia. x 2 1/2 D | 50 |
| • N-423-GC-V | 22.5 | Angled side nails | Molded fast clamps | 4 Dia. x 2 1/2 D | 50 |

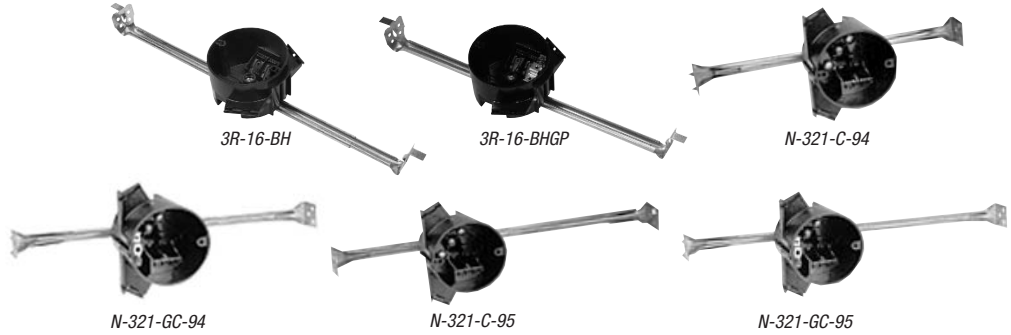
• Listed for fixture support up to 50 lbs.

Carlton® PC

Ceiling Boxes – New Work

Ceiling Boxes with Bar Hanger

- Meets NEMA OS-2



3 1/2" 20.5 Cu.In



| CAT. NO. | SIZE CU. IN. | MOUNTING MEANS | DESCRIPTION | DIMENSIONS (IN.) | STD. CTN. QTY. |
|---------------|--------------|---|---|----------------------|----------------|
| • 3R-16-BH | 16.0 | Combo Bar 14 ⁵ / ₁₆ " min - 25" max | POSI-WEDGE® cable clamps | 3 1/2 Dia. x 2 1/4 D | 25 |
| • 3R-16-BHGP | 16.0 | Combo Bar 14 ⁵ / ₁₆ " min - 25" max | POSI-WEDGE® cable clamps ground strap installed | 3 1/2 Dia. x 2 1/4 D | 25 |
| • N-321-C-94 | 20.5 | 16" bar hanger 12 1/4" min.–19" max. | Molded fast clamps | 3 1/2 Dia. x 3 1/8 D | 50 |
| • N-321-GC-94 | 20.5 | 16" bar hanger 12 1/4" min.–19" max. | Molded fast clamps ground strap installed | 3 1/2 Dia. x 3 1/8 D | 50 |
| • N-321-C-95 | 20.5 | Combo Bar 14 ⁵ / ₁₆ " min - 25" max | Molded fast clamps | 3 1/2 Dia. x 3 1/8 D | 50 |
| • N-321-GC-95 | 20.5 | Combo Bar 14 ⁵ / ₁₆ " min - 25" max | Molded fast clamps ground strap installed | 3 1/2 Dia. x 3 1/8 D | 50 |

- Listed for fixture support up to 50 lbs.



4" 22.5 Cu.In.



| CAT. NO. | SIZE CU. IN. | MOUNTING MEANS | DESCRIPTION | DIMENSIONS (IN.) | STD. CTN. QTY. |
|-----------------|--------------|---|---|------------------|----------------|
| • N-423-C-94-V | 22.5 | 16" bar hanger 12 1/4" min.–19" max. | Molded fast clamps | 4 Dia. x 2 1/2 D | 50 |
| • N-423-GC-94-V | 22.5 | 16" bar hanger 12 1/4" min.–19" max. | Molded fast clamps ground strap installed | 4 Dia. x 2 1/2 D | 50 |
| • N-423-C-95-V | 22.5 | Combo Bar 14 ⁵ / ₁₆ " min - 25" max | Molded fast clamps | 4 Dia. x 2 1/2 D | 50 |
| • N-423-GC-95-V | 22.5 | Combo Bar 14 ⁵ / ₁₆ " min - 25" max | Molded fast clamps ground strap installed | 4 Dia. x 2 1/2 D | 50 |

- Listed for fixture support up to 50 lbs.





Saddle Type Ceiling Fan/Fixture Boxes



CFB-12



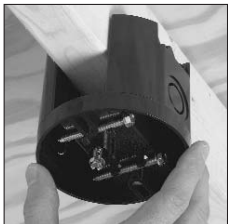
CFB-16



Saddle Type Fan/Fixture 12.0 – 16.0 Cu.In.

| CAT. NO. | SIZE CU. IN. | MOUNTING MEANS | DESCRIPTION | DEPTH | STD. CTN. QTY. |
|----------|--------------|-----------------------|--|--------|----------------|
| • CFB-12 | 12.0 | Lag screws (supplied) | Non-metallic saddle type ceiling fan/fixture box with v-clamps for non-metallic sheathed cable. | 2 3/8 | 50 |
| • CFB-16 | 16.0 | Lag screws (supplied) | Non-metallic saddle type ceiling fan/fixture box with v-clamps for non-metallic sheathed cable and two 1/2" KOs. | 3 5/16 | 50 |

• Listed for fan and fixture support up to 70 lbs.



Easy press-fit onto the joist. Integrally molded ribs grip the joist and stop the box from falling.



Just one hand is required to mount the box using the pre-located mounting screw.



Integrally molded cable V-clamps provide easy and secure clamping for non-metallic cables.



CFB-16 features 1/2" KOs in addition to V-clamps.

Pan Boxes



CFB-612



CFBSO-612



CFB-858



CFBSO-858



6.0 - 8.0 Cu.In.

| CAT. NO. | SIZE CU. IN. | MOUNTING MEANS | DESCRIPTION | DIMENSIONS (IN.) | STD. CTN. QTY. |
|-----------|--------------|-----------------------|--|------------------|----------------|
| CFB-612 | 6.0 | Lag screws (supplied) | Shallow ceiling fan box with V clamp, round 7/8" dia KO | 4 Dia. x 1/2 D | 50 |
| CFBSO-612 | 6.0 | Lag screws (supplied) | Shallow ceiling fan box with V clamp, round 7/8" dia KO, and snap on feature | 4 Dia. x 5/8 D | 50 |
| CFB-858 | 8.0 | Lag screws (supplied) | Shallow ceiling fan box with V clamp, round 7/8" dia KO | 4 Dia. x 1/2 D | 50 |
| CFBSO-858 | 8.0 | Lag screws (supplied) | Shallow ceiling fan box with V clamp, round 7/8" dia KO, and snap on feature | 4 Dia. x 5/8 D | 50 |



Carlon® PH

New Work Boxes

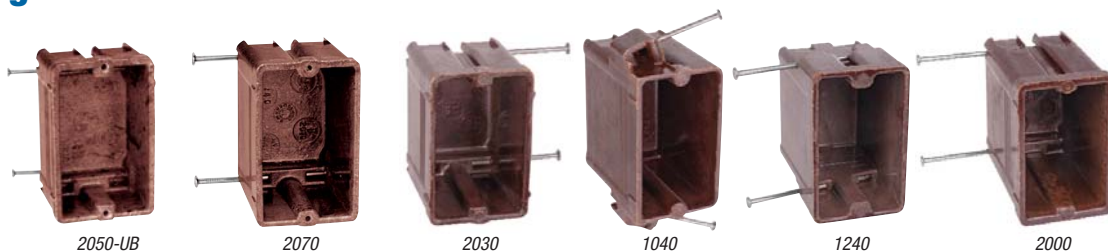
Carlon® Brown Phenolic Boxes

Carlon® Brown Phenolic Boxes

New Fire Rating! Carlon® phenolic boxes can be installed in the same stud cavity of a shared two-hour wall. They may also face opposite directions with only a 3" horizontal separation — ideal for multi-family construction!

- All Phenolic boxes are listed to UL514C
- All Phenolic boxes are listed for masonry walls
- All Phenolic boxes are UL Classified for 2 hr. fire wall and/or fire ceiling
- All Phenolic boxes meet NEMA OS-2
- All Phenolic boxes are permissible for use with 90 degree C conductors
- UL File E11461 and R9140

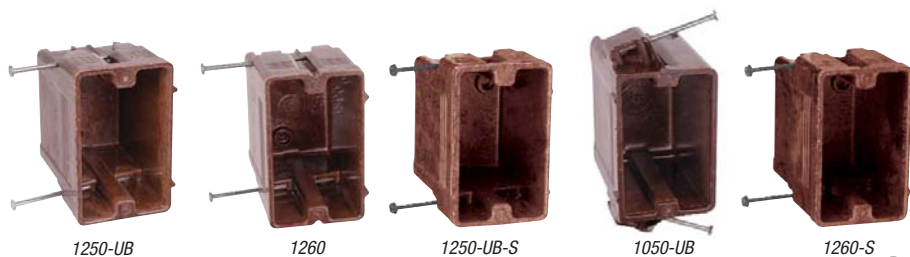
One-Gang Nail On



One-Gang Nail On 9.0 – 18.0 Cu. In.



| CAT. NO. | SIZE CU. IN. | MOUNTING MEANS | DESCRIPTION | DIMENSIONS (IN.) | STD. CTN. QTY. |
|----------|--------------|-----------------------|-------------|--|----------------|
| 2050-UB | 9.0 | Bottom nails | — | 3 ⁹ / ₁₆ L x 2 ¹ / ₄ W x 1 ¹³ / ₁₆ D | 100 |
| 2070 | 14.0 | Bottom nails | — | 3 ⁹ / ₁₆ L x 2 ¹ / ₄ W x 2 ⁵ / ₈ D | 100 |
| 2030 | 16.0 | Bottom nails | — | 3 ⁹ / ₁₆ L x 2 ¹⁵ / ₃₂ W x 2 ¹³ / ₁₆ D | 100 |
| 1040 | 18.0 | Compound angled nails | — | 3 ⁹ / ₁₆ L x 2 ¹ / ₈ W x 3 ¹ / ₈ D | 100 |
| 1240 | 18.0 | Recessed angled nails | — | 3 ¹¹ / ₁₆ L x 2 ¹ / ₄ W x 3 ⁵ / ₁₆ D | 100 |
| 2000 | 18.0 | Bottom nails | "Classic" | 3 ¹¹ / ₁₆ L x 2 ¹ / ₄ W x 3 ¹ / ₈ D | 100 |



One-Gang Nail On 20.3 – 22.5 Cu. In.



| CAT. NO. | SIZE CU. IN. | MOUNTING MEANS | DESCRIPTION | DIMENSIONS (IN.) | STD. CTN. QTY. |
|-----------|--------------|---|-------------|---|----------------|
| 1250-UB | 20.3 | Recessed angled nails | — | 3 ⁷ / ₈ L x 2 ³ / ₈ W x 3 ³ / ₈ D | 100 |
| 1250-UB-S | 20.3 | Recessed angled tech screws for wood or steel studs | — | 3 ⁷ / ₈ L x 2 ³ / ₈ W x 3 ³ / ₈ D | 100 |
| 1050-UB | 21.0 | Compound angled nails | — | 3 ⁹ / ₈ L x 2 ⁵ / ₁₆ W x 3 ¹ / ₂ D | 50 |
| 1260 | 22.5 | Recessed angled nails | — | 3 ⁷ / ₈ L x 2 ³ / ₈ W x 3 ²¹ / ₃₂ D | 50 |
| 1260-S | 22.5 | Recessed angled tech screws for wood or steel studs | — | 3 ⁷ / ₈ L x 2 ³ / ₈ W x 3 ²¹ / ₃₂ D | 50 |

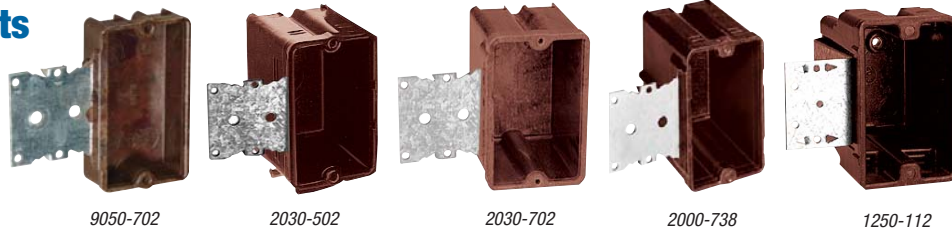


Carlton[®] PH New Work Boxes



Carlton[®] Brown Phenolic Boxes

One-Gang Brackets



9050-702

2030-502

2030-702

2000-738

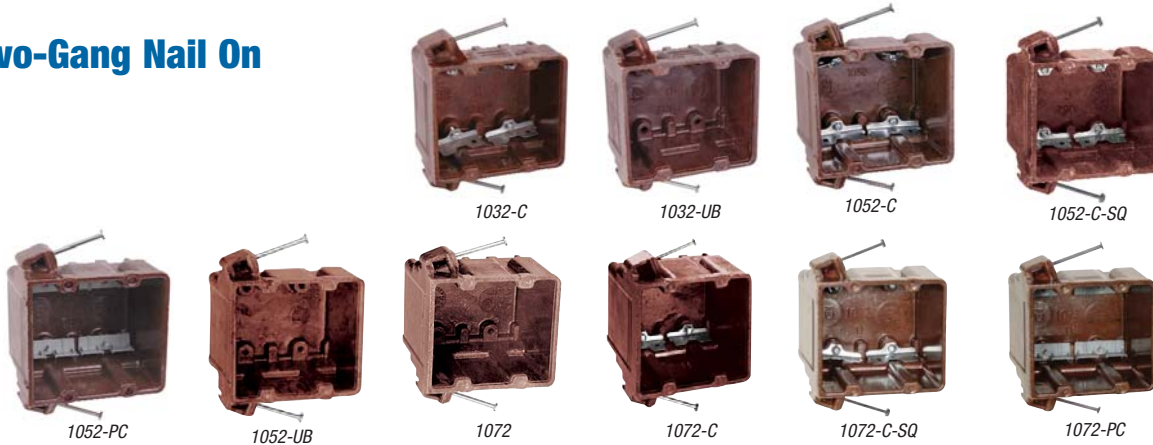
1250-112

One-Gang Brackets 5.0 – 20.3 Cu. In.



| CAT. NO. | SIZE CU. IN. | MOUNTING MEANS | DESCRIPTION | DIMENSIONS (IN.) | STD. CTN. QTY. |
|----------|--------------|--|-------------|------------------------------|----------------|
| 9050-702 | 5.0 | 1/4" offset bracket for wood/steel studs | — | 3 1/16 L x 2 1/8 W x 1 D | 100 |
| 2030-502 | 16.0 | 1/2" offset bracket for wood/steel studs | — | 3 5/8 L x 2 1/4 W x 2 3/4 D | 100 |
| 2030-702 | 16.0 | 1/4" offset bracket for wood/steel studs | — | 3 5/8 L x 2 1/4 W x 2 3/4 D | 100 |
| 2000-738 | 18.0 | 3/8" offset bracket for wood/steel studs | — | 3 5/8 L x 2 5/16 W x 3 1/8 D | 100 |
| 1250-112 | 20.3 | 1/2" offset bracket for wood/steel studs | — | 3 7/8 L x 2 3/8 W x 3 3/8 D | 50 |

Two-Gang Nail On



1032-C

1032-UB

1052-C

1052-C-SQ

1052-PC

1052-UB

1072

1072-C

1072-C-SQ

1072-PC

Two-Gang Nail On 27.5 – 40.5 Cu. In.



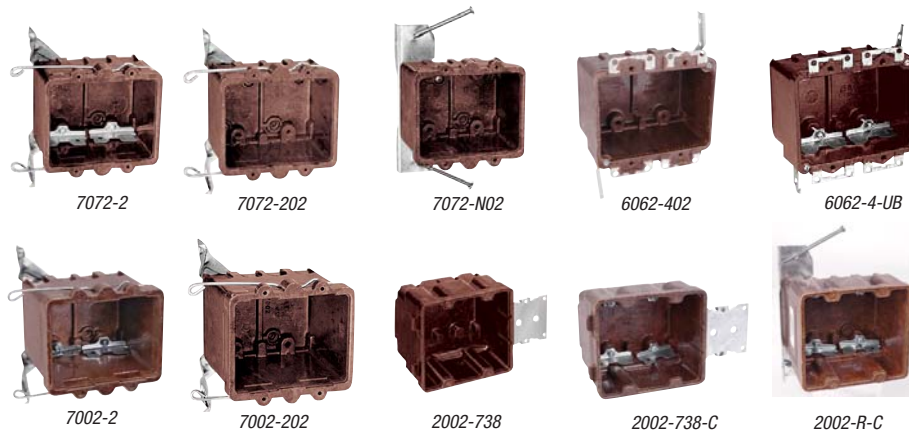
| CAT. NO. | SIZE CU. IN. | MOUNTING MEANS | DESCRIPTION | DIMENSIONS (IN.) | STD. CTN. QTY. |
|-----------|--------------|-----------------------|--|--------------------------------|----------------|
| 1032-C | 27.5 | Compound angled nails | High clamps | 3 5/8 L x 4 1/16 W x 2 11/16 D | 50 |
| 1032-UB | 27.5 | Compound angled nails | #36 clamps bulk packed | 3 5/8 L x 4 1/16 W x 2 11/16 D | 50 |
| 1052-C | 32.5 | Compound angled nails | High clamps | 3 5/8 L x 4 1/16 W x 3 1/8 D | 50 |
| 1052-C-SQ | 32.5 | Compound angled nails | High clamps with #2 Sq+Ph combo head screw | 3 5/8 L x 4 1/16 W x 3 1/8 D | 50 |
| 1052-PC | 32.5 | Compound angled nails | Non-metallic clamps | 3 5/8 L x 4 1/16 W x 3 1/8 D | 50 |
| 1052-UB | 32.5 | Compound angled nails | #36 clamps bulk packed | 3 5/8 L x 4 1/16 W x 3 1/8 D | 50 |
| 1072 | 40.5 | Compound angled nails | #36 clamps bulk packed | 3 5/8 L x 4 3/32 W x 3 7/8 D | 50 |
| 1072-C | 40.5 | Compound angled nails | High clamps | 3 5/8 L x 4 3/32 W x 3 7/8 D | 50 |
| 1072-C-SQ | 40.5 | Compound angled nails | High clamps with #2 Sq+Ph combo head screw | 3 5/8 L x 4 3/32 W x 3 7/8 D | 50 |
| 1072-PC | 40.5 | Compound angled nails | Non-metallic clamps | 3 5/8 L x 4 3/32 W x 3 7/8 D | 50 |



Carlton® PH New Work Boxes

Carlton® Brown Phenolic Boxes

Two-Gang Brackets



Two-Gang Brackets 24.0 – 34.0 Cu. In.



| CAT. NO. | SIZE CU. IN. | MOUNTING MEANS | DESCRIPTION | DIMENSIONS (IN.) | STD. CTN. QTY. |
|--------------|--------------|---|---|--|----------------|
| 7072-2 | 24.0 | #2 bottom bracket and wire support | High clamps | 3 ⁵ / ₁₆ L x 4 W x 2 ³ / ₄ D | 50 |
| 7072-202 | 24.0 | #2 bottom bracket and wire support | #36 clamps bulk packed | 3 ⁵ / ₁₆ L x 4 W x 2 ³ / ₄ D | 50 |
| 7072-N02 | 24.0 | "N" bracket | #36 clamps bulk packed | 3 ⁵ / ₁₆ L x 4 W x 2 ³ / ₄ D | 50 |
| 6062-402 | 25.0 | Ears, #4 swing bracket | #36 clamps bulk packed | 3 ³ / ₈ L x 4 ³ / ₁₆ W x 2 ¹ / ₂ D | 50 |
| 6062-4-UB | 25.0 | Ears, #4 swing bracket | High clamps | 3 ³ / ₈ L x 4 ³ / ₁₆ W x 2 ¹ / ₂ D | 50 |
| 6062-4-UB-SQ | 25.0 | Ears, #4 swing bracket | High clamps with #2 Sq+Ph combo head screw | 3 ³ / ₈ L x 4 ³ / ₁₆ W x 2 ¹ / ₂ D | 50 |
| 7002-2 | 32.5 | #2 bottom bracket and wire support | High clamps | 3 ¹ / ₄ L x 4 W x 3 ⁵ / ₈ D | 50 |
| 7002-202 | 32.5 | #2 bottom bracket and wire support | #36 clamps bulk packed | 3 ¹ / ₄ L x 4 W x 3 ⁵ / ₈ D | 50 |
| 2002-738 | 34.0 | 3/8" offset brackets for wood/steel studs | 3/8" Offset wallboard tabs & #36 clamps bulk packet | 3 ¹¹ / ₁₆ L x 4 ³ / ₁₆ W x 3 ¹ / ₄ D | 50 |
| 2002-738-C | 34.0 | 3/8" offset brackets for wood/steel studs | 3/8" Offset wallboard tabs & high clamps | 3 ¹¹ / ₁₆ L x 4 ³ / ₁₆ W x 3 ¹ / ₄ D | 50 |
| 2002-R-C | 34.0 | "R" bracket | High clamps | 3 ¹¹ / ₁₆ L x 4 ³ / ₃₂ W x 3 ¹ / ₄ D | 50 |

