

# Technical specifications

	EA1500	EVO5 500 HRV	EVO5 700 HRV HEPA
<b>Typical ventilation area</b>	2,000 sq. ft.*	2,700 sq. ft.	3,000 sq. ft.
<b>Rate of air flow (fresh air)</b>	30-55 cfm**	50-94 cfm	50-104 cfm
<b>Total air flow</b>	185 cfm	94 cfm	104 cfm
<b>Filter</b>	Mesh	Foam	HEPA
<b>Diameter of air exhaust outlets and fresh air vents</b>	4 or 5 in.	5 in.	5 in.
<b>Diameter of indoor air ports</b>	6 in.	5 in.	5 in.
<b>Voltage</b>	120 V	120 V	120 V
<b>Power</b>	140 W	42 W	42 W
<b>Annual energy cost (\$)***</b>	275	89	89
<b>Height</b>	12.25 in.	17.5 in.	17.5 in.
<b>Width</b>	23 in.	30.5 in.	33 in.
<b>Depth</b>	15 in.	11.5 in.	11.5 in.
<b>Weight (approx.)</b>	40 lb. (18 kg)	53 lb. (24 kg)	56 lb. (25 kg)
<b>Installation kit (sold separately)</b>	15273	IKSV1000	IKSV1000
<b>Attic installation kit (sold separately)</b>	EA20130	-	-
<b>Optional bathroom installation kit</b>	N/A	IKBV1000	IKBV1000
<b>Wall control (included)</b>	C34	40405	40405
<b>ENERGY STAR certified</b>	No	Yes	Yes
<b>HVI certified (Home Ventilating Institute)</b>	No	Yes	Yes



\* IMPORTANT NOTICE: FOR NEW CONSTRUCTIONS, PLEASE REFER TO YOUR LOCAL BUILDING CODE.  
 \*\* CUBIC FEET PER MINUTE.  
 \*\*\* USING THE UNIT 80% OF THE TIME DURING HEATING SEASON. DATA FOR MONTREAL WITH ELECTRIC HEAT.  
 †STANDARD WARRANTY: 1 YEAR, AND EXTEND YOUR WARRANTY BY 1 YEAR IF YOU REGISTER THIS PRODUCT ONLINE.



**CUSTOMER SERVICE**

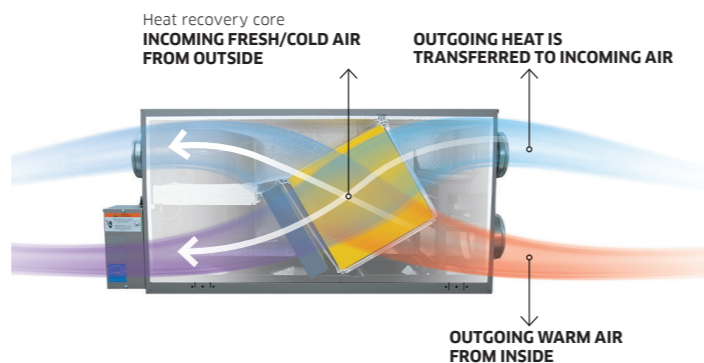
1-800-567-1484

venmar.ca

# How does heat recovery work?

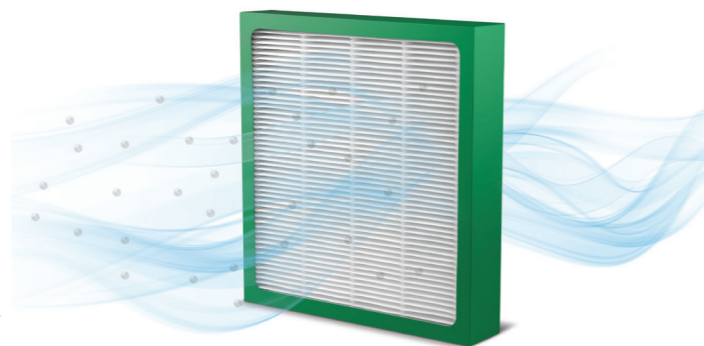
**AN AIR EXCHANGER WITH HEAT RECOVERY:**

- Is ideal for colder climates
- Makes the home more comfortable
- Reduces energy consumption
- Eliminates unpleasant drafts



# Choose HEPA filtration

HEPA FILTERS (HIGH EFFICIENCY PARTICULATE AIR) CAPTURE 99.97% OF ALLERGENS AND MICROSCOPIC PARTICLES. THEY CAN CONTRIBUTE TO REDUCING THE SYMPTOMS OF ALLERGIES, ASTHMA, COLDS AND PERSISTENT COUGHING.



91524 20/08

# Choose your installation option

**DO IT YOURSELF**

Installation can be done with easy-to-use kits that contain all the components you need to install a Venmar unit. Each comes with an easy-to-follow installation guide in the box and also online.

**PROFESSIONAL INSTALLATION**

A recommended installer will go to your home for an estimate. The cost of the estimate will be deducted from the cost of installation.

To find a Venmar-recommended professional installation service in your area, consult the **RIS flyer** (available in this display) or call **1-800-567-3855**.



# CLEAN AIR LIVING<sup>MC</sup>

**BUYING GUIDE**



# Why do today's homes need ventilation?

TODAY'S HIGHLY INSULATED AND WELL-SEALED HOMES TRAP IN HUMIDITY, STALE AIR AND POLLUTANTS. AN AIR EXCHANGER IS AN EFFECTIVE AND ENERGY-EFFICIENT WAY TO CONTINUOUSLY REFRESH THE AIR IN YOUR HOME.

Evacuates stale air and pollutants

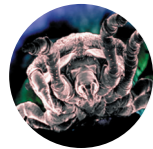


Introduces healthful fresh air from outside

Controls excess humidity



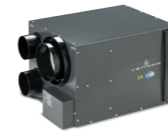
Helps prevent mould and mildew



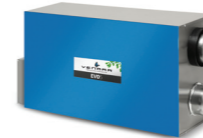
Minimises odours and cooking residue



# Choose your air exchanger



**EA 1500**  
SMALL-SIZE HOME  
(UP TO 2,000 SQ. FT.)



**EVO5 500 HRV**  
MEDIUM-SIZE HOME  
(UP TO 2,700 SQ. FT.)



**EVO5 700 HRV HEPA**  
LARGE-SIZE HOME  
(UP TO 3,000 SQ. FT.)



## AIR EXCHANGE

Expels polluted indoor air and continually exchanges it with fresh outdoor air to improve indoor air quality.



## EXCESS HUMIDITY CONTROL

Expels excess humidity and reduces the risk of window condensation, which prevents damage to and deterioration of your home.



## RECIRCULATION

Features a recirculation setting, which allows you to filter your indoor air 24 hours a day and attain a consistent temperature throughout your whole home.



## ENERGY STAR® CERTIFIED

Annual energy consumption reduced by 50% (EVO5 700) and 25% (EVO5 500).



## HEAT RECOVERY

Constant supply of fresh, warm air, no unpleasant drafts and greater home comfort.



## HEPA FILTRATION

- Captures 99.97% of all dust and particles, even those as small as 0.3 micron.
- Can help reduce allergy symptoms, asthma, recurring colds and persistent coughs.



## WALL CONTROL



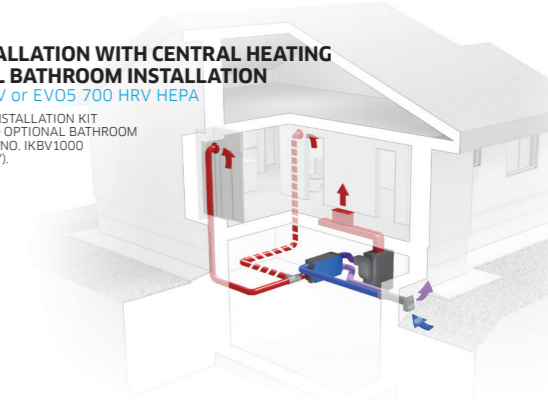
# Choose your installation type

If your house has a forced-air system or baseboard heating, you're all set for central air exchange. Installation is quick, easy and safe.

## BASIC INSTALLATION WITH CENTRAL HEATING + OPTIONAL BATHROOM INSTALLATION

EVO5 500 HRV or EVO5 700 HRV HEPA

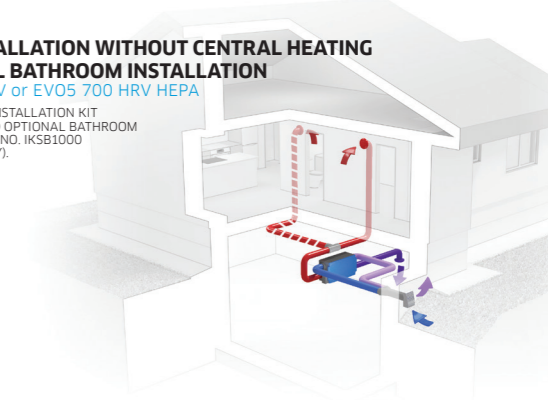
REQUIRES BASIC INSTALLATION KIT NO. IKS11000 AND OPTIONAL BATHROOM INSTALLATION KIT NO. IKS11000 (SOLD SEPARATELY).



## BASIC INSTALLATION WITHOUT CENTRAL HEATING + OPTIONAL BATHROOM INSTALLATION

EVO5 500 HRV or EVO5 700 HRV HEPA

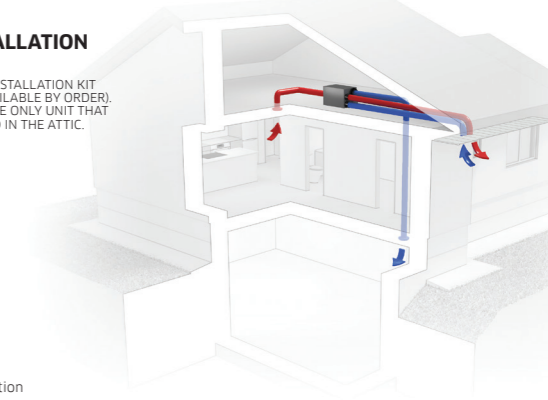
REQUIRES BASIC INSTALLATION KIT NO. IKS11000 AND OPTIONAL BATHROOM INSTALLATION KIT NO. IKS11000 (SOLD SEPARATELY).



## ATTIC INSTALLATION

EA 1500

REQUIRES ATTIC INSTALLATION KIT NO. EA20130 (AVAILABLE BY ORDER). THE EA 1500 IS THE ONLY UNIT THAT CAN BE INSTALLED IN THE ATTIC.



- Fresh air
- Stale air
- Tempered air
- Bathroom option



Venmar air exchangers are proudly made in Canada, in Drummondville, Qc.